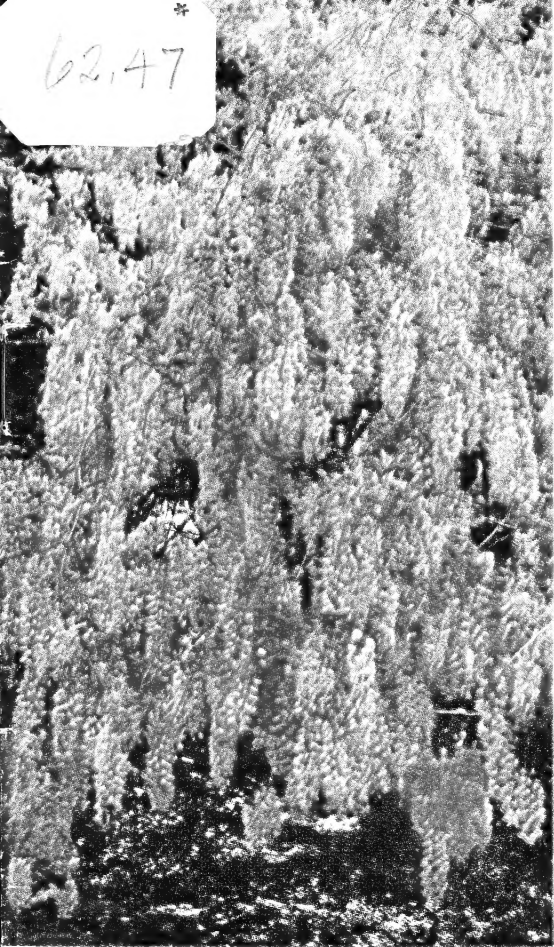


Historic, Archive Document

Do not assume content reflects current scientific knowledge, policies, or practices.

62.47



Pink Wistaria

TWO LOVELY WISTARIAS

PINK WISTARIA. This is the finest pink Wistaria we have ever seen. Clusters about 15-18 inches long. Slow to commence flowering but once started it blooms profusely. **Each, \$3.00.**

DOUBLE VIOLET WISTARIA. The only double Wistaria known in this country, and has the darkest colored flowers of all. They are exactly like dark-colored purple Violets borne in clusters about 15-18 inches long. Very free bloomer. **Each, \$3.00.**

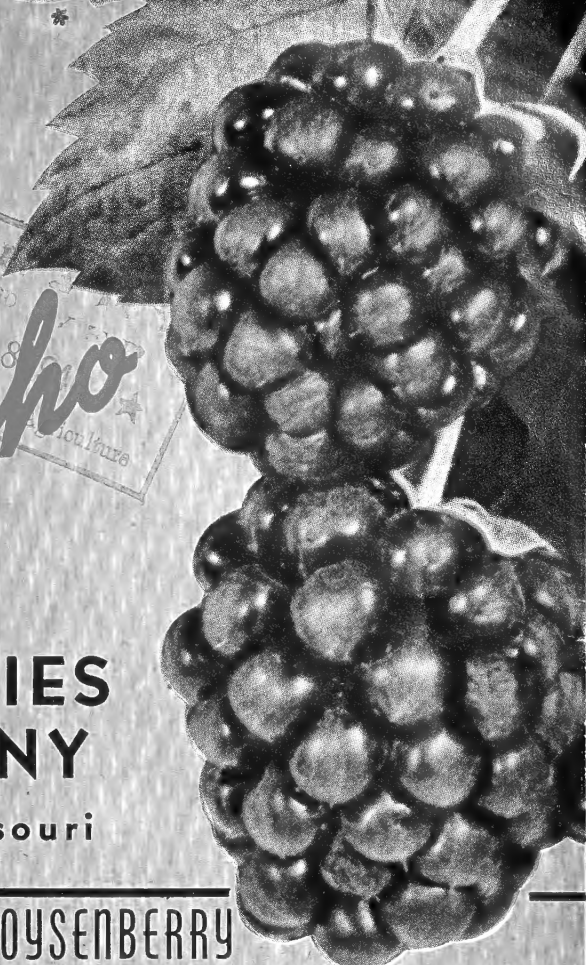
SPRING
1946



Neosho

NURSERIES COMPANY

Neosho, Missouri



THORNLESS BOYSENBERRY

Immense, delicious berries with a tangy Raspberry-Dewberry flavor. It is easy to pick these big, juicy berries on these THORNLESS plants. Will produce a heavy crop the second season.

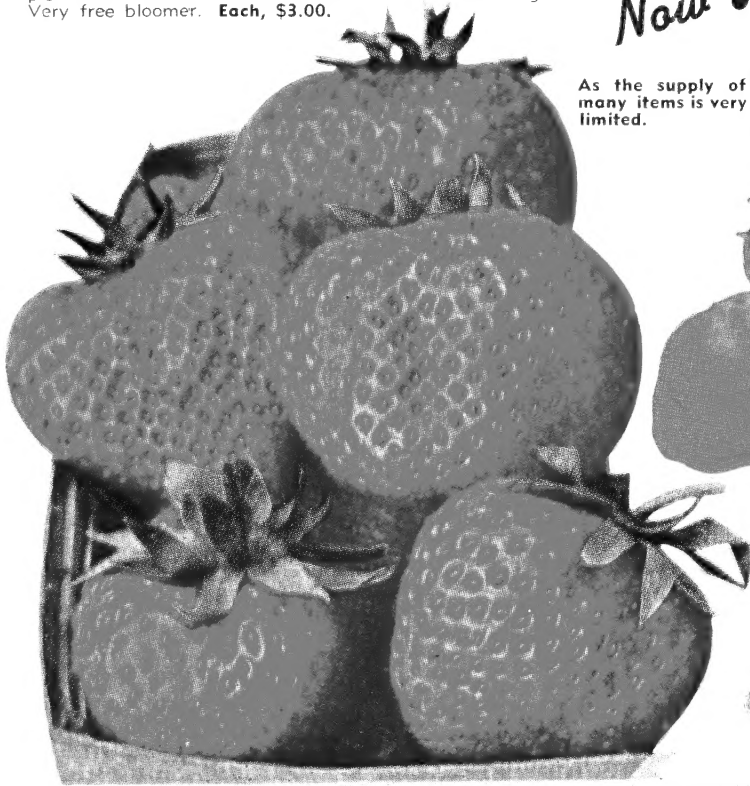
10 for \$2.25 25 for \$4.95 50 for \$8.75 100 for \$15.95
For spring shipment only.

*Order
Now!*

SUNGOLD (Hypericum)

SUNGOLD (Hypericum). (Plant Patent No. 568.) A brilliant mound of gold all summer. Dazzling golden flowers 2 to 3 inches in diameter on a low growing shrub of glossy green foliage. Fine for foundation planting. **Heavy 2-yr., each, \$2.50.**

As the supply of many items is very limited.



MINNESOTA 1166 The New Everbearing Strawberry Supreme

Large size, beautiful dark solid red; finest flavor, a strong grower and heavy producer. The best Everbearer to date.

25 for \$2.00 50 for \$3.65 100 for \$6.95





A. E. Weston

Neosho Nurseries Owned by Employees

The Neosho Nurseries Company is owned by the employees who operate it. Not only our President, A. E. Weston, but those in charge of every department are directly interested in your success and making future friends and customers for Neosho Nurseries.

WE GROW OUR OWN STOCK

So in ordering from Neosho Nurseries Company you are getting your trees and plants direct from the grower. We own and cultivate 400 acres of Missouri's most fertile land especially suited for producing strong, vigorous, healthy root systems. The following figures will give you a better picture of our extensive operations.

100,000 Peach	250,000 Shrubs	250,000 Berries
20,000 Cherry	60,000 Apple	100,000 Evergreens
100,000 Grapes	10,000 Pear and Plum	10,000 Shade Trees

The Neosho Nurseries are not only one of the largest growers of nursery stock in the United States, but we offer the widest assortment of new and improved varieties from which you may make your choice, with thousands of specimens of each item.

We maintain vitality and vigorous conditions by transporting all trees and plants from field to storage in enclosed, covered, air-tight trucks especially constructed for this purpose.

We maintain a trial grounds and test orchard for testing new varieties to find if they are suitable to soil and climatic conditions, to determine if they are hardy, productive and resistant to disease before offering them to our customers.

Our office and packing house at Neosho covers 37,000 sq. ft. At Newtonia, 11 miles east of Neosho, where most of our Hagerstown silt loam land is situated, we have many buildings, including a concrete storage house where the stock is graded and sorted without exposure to drying sun or wind.

NEOSHO GUARANTEE

1. True to name stock is our unqualified guarantee. We will replace without charge, or refund purchase price if any proves otherwise.
2. "Yours for Growing Satisfaction" is our slogan. Hence we guarantee highest quality and arrival in good condition. Examine shipment carefully on arrival. Any complaints made within ten days will be cheerfully adjusted to your satisfaction. We will either refund purchase price or replace stock, as you prefer.
3. Despite every precaution in shipping, handling and planting, there are occasional losses, even with the best of stock, over which none of us have any control. Hence we offer to help you by sharing your loss. We will replace at one-half price any stock that fails to grow, if you will report by July 1st, following planting.

TERMS

All orders are f. o. b. Neosho unless otherwise specified in catalog. 10% deposit with order, balance when you are ready for shipment. Orders less than \$10.00 must be accompanied by full cash with order. We prefer to ship by Express as they insure satisfactory service. You pay only actual transportation on arrival.

Please do not specify Parcel Post unless you have no nearby Express Station. If necessary to specify Parcel Post shipment, add 10% to your remittance to cover postage. On orders under \$5.00 add 15%.

SALES TAX

Missouri customers please add 2% to cover Missouri Sales Tax.

*We Own and Operate
400 Acres*

**Ordering from Neosho
is Like Buying
Direct from the Factory**

SUBSTITUTIONS

These days when demand exceeds supply and it is impossible for us to replenish our supply from other sources, we occasionally find ourselves sold out of the size ordered by customers. In such case it is our practice to give the next size available in the same variety and give additional items to more than offset price. In the event it is necessary to change variety we advise customer of such changes and also add complimentary stock.



STATE OF MISSOURI
DEPARTMENT OF AGRICULTURE
JEFFERSON CITY

OFFICE OF THE STATE ENTOMOLOGIST

ORIGINAL

No. 2

NURSERY INSPECTION CERTIFICATE

THIS IS TO CERTIFY THAT, in accordance with the Missouri Insect Pest and Plant Disease Law, the nursery and premises belonging to the individual or firm whose name appears herein have been duly inspected by an authorized Entomologist, and were found to be apparently free of injurious insect pests and plant diseases.

This Certificate is not transferable, and is subject to revocation and other penalties under the provisions of the Laws relating thereto.

Issued June 25, 1945. Expires September 1, 1946.

Fee, \$ 33.50

J. A. Drenning
State Entomologist

These Rows 1/4 Mile Long—100,000 Peach Trees in This Block

PREMIUMS and PRIORITIES

for Ordering Early

Thousands were too late last year. Fruit trees are even more scarce this year. Demand is greater than supply.

Even with our large acreage we had to disappoint many customers last spring who waited too late in ordering. We just couldn't supply the demand. Many varieties are still just as scarce; some are unobtainable. Orders will receive **priority** according to the succession in which they are received. It is simply a question of first come, first served. **Order early** and your material will be tagged and reserved, ready for shipment at the proper time for planting. If you desire, you may specify on your order date you want shipment made. We will include a **Free Premium** with all orders received before February 15th (except on Special Offers).



PERFECTION CURRANT

The standard of quality in Currants. Extra large red berries. Fine for jelly and preserves.
 2 for 98c 5 for \$2.25 9 for \$3.75

BLACKBERRIES

EARLY HARVEST. Ripens early, with glossy jet-black berries of medium size and excellent quality. Heavy bearer and very hardy. Prolongs picking season.

10 for \$1.50 50 for \$5.50
 25 for 2.95 100 for 9.75

ELDORADO. The hardiest Blackberry. Thrives on poor soil better than other varieties. Large, firm, sweet-flavored berries, almost coreless. Ripens over a long period. A heavy regular bearer.

10 for \$1.50 50 for \$5.50
 25 for 2.95 100 for 9.75

McDONALD HYBRID BLACKBERRY. (Very Early.) A Blackberry-Dewberry Hybrid. It is large, oblong, very good quality; drought resistant, vigorous grower. Plant in rows 8 to 10 feet apart. The vine trails on the ground the first season like Dewberry, but grows upright the next year. We will include with each 25 McDonald plants 5 plants free of Early Harvest for cross pollination. Plant every 4th or 5th plant for heavy fruiting.

25 for \$3.50 50 for \$6.95
 100 for \$10.95

Healthy—Tender ASPARAGUS

Asparagus is among the most welcome of the early spring vegetables, and deserves a place in every garden. Plant Neosho roots, and be sure of the finest vegetables for your own table or for sale. Don't forget Neosho's direct-from-grower-to-you prices save you money. Order these early spring vegetables in plenty of time for planting!

MARY WASHINGTON. The best Asparagus whether for home use or market. This variety was developed by U. S. Department of Agriculture and is rust resistant. It is earlier, stalks are larger, more tender, more productive than any other variety.

	12	25	50	100	300
Heavy. 1 yr.	\$1.25	\$1.95	\$3.75	\$8.95	
Jumbo. 2 yr.	\$0.95	1.75	2.95	4.95	12.95



Oregon Champion GOOSEBERRIES

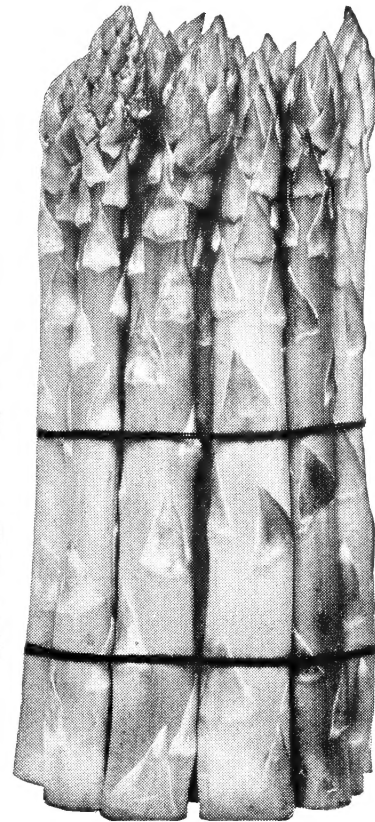
The ranking Gooseberry in both size and quality. Extra large pale transparent berries of unexcelled quality. Brings highest prices. Wonderful for pies and preserves.

No. 1 Plants:

2 for \$1.19 5 for \$2.75 9 for \$4.50

Old-Fashioned SAGE

To flavor the Thanksgiving turkey. Heavy clumps, each 50c; 3 for \$1.35.



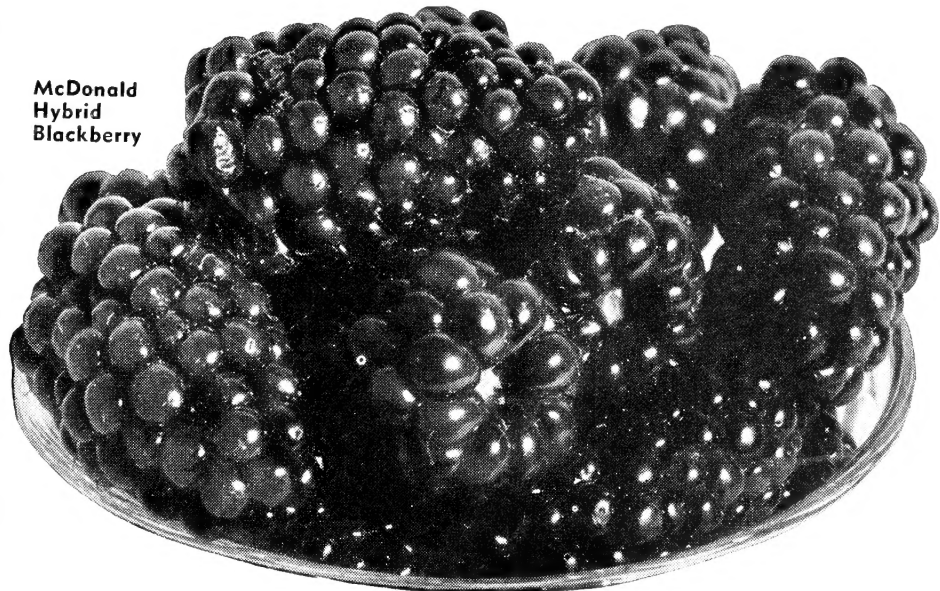
Mary Washington Asparagus

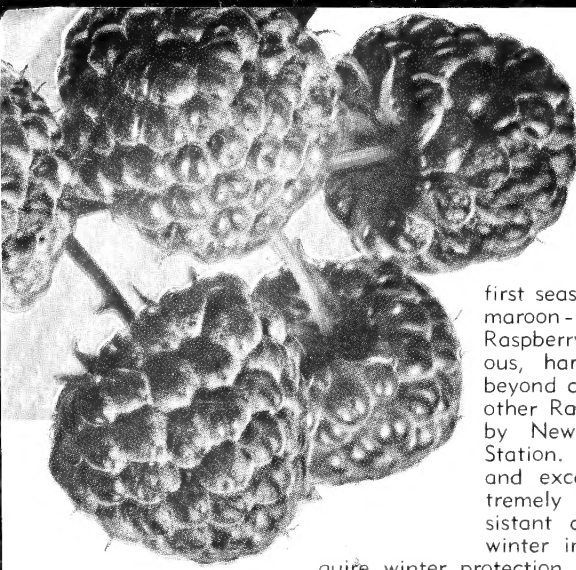
Crisp—Snappy HORSE RADISH

True Maliner Kren which has that crisp, snappy taste without bitterness. Will grow on most any soil.

	3	12
Cuttings	\$0.35	\$0.95
Crowns75	2.25

McDonald Hybrid Blackberry

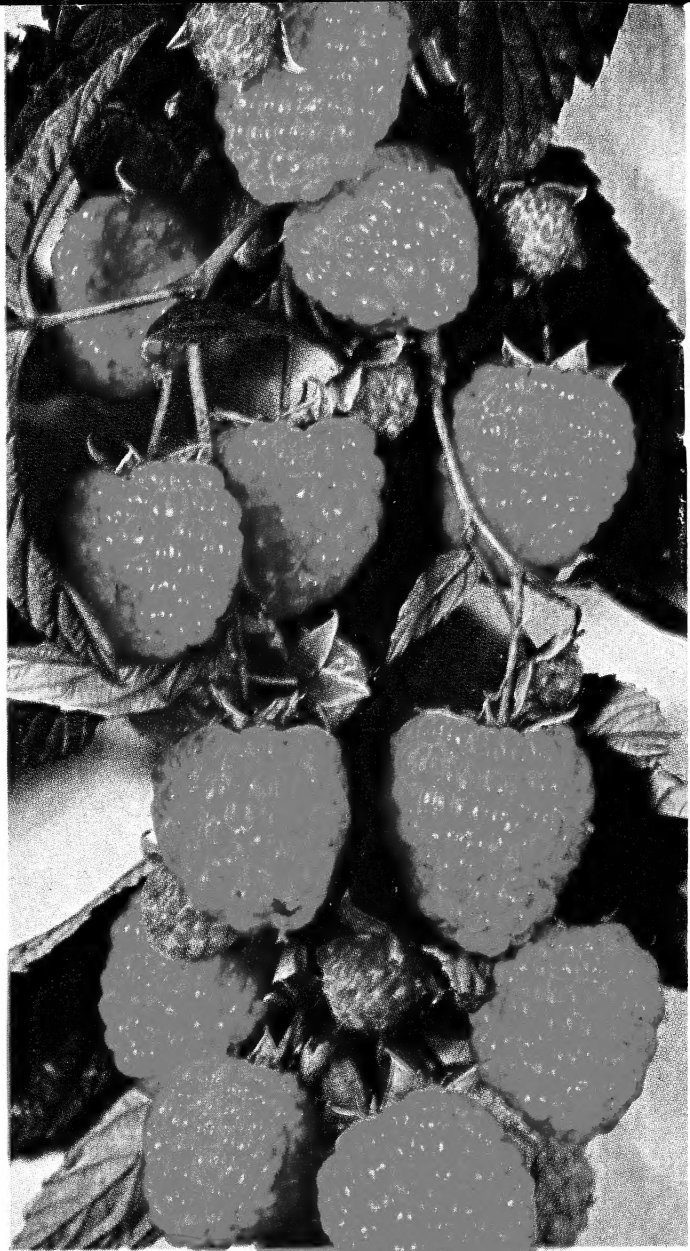




←
**SODUS
Purple
Raspberry**

Produces fruit the first season. Wonderful new maroon-cardinal colored Raspberry. Extremely vigorous, hardy and productive beyond comparison with any other Raspberry. Originated by New York Experiment Station. Berries large, firm and excellent quality. Extremely hardy, drought resistant and not subject to winter injury; does not require winter protection even in Minnesota.

10 for \$1.75 50 for \$ 6.95
25 for 3.50 100 for 11.95



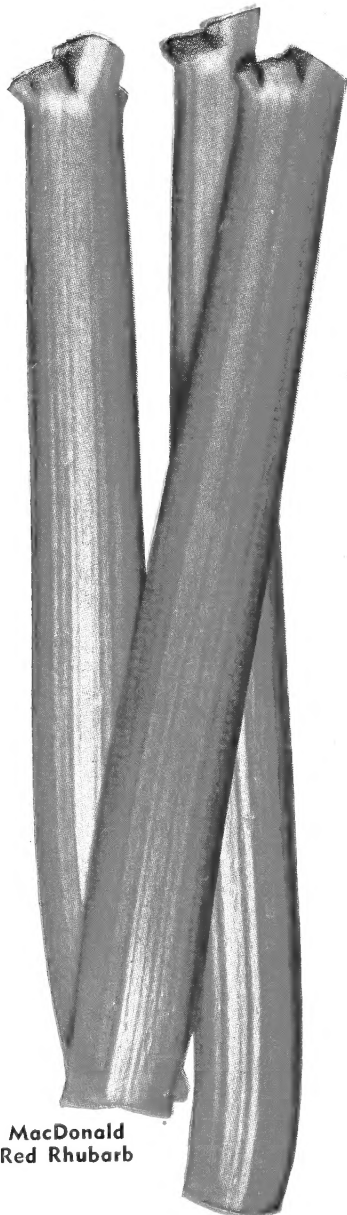
Indian Summer

RHUBARB

VICTORIA RHUBARB. A giant red-stalked variety; early, tender, with mild acid flavor.

5/8-inch diameter 3 for \$0.50; 6 for \$0.90; 12 for \$1.60
1 1/2-inch diameter . . . 3 for .75; 6 for 1.35; 12 for 2.50

RED RHUBARB, MacDONALD. The best large, red Rhubarb with stalks of giant size; tender and sweet, requiring less sugar. Stays tender far into the summer. Can be grown only from divisions, which makes it cost more, but you get the genuine red, giant size, heavy producing strain. **Large divisions, each 75c; 3 for \$1.95.**



MacDonald
Red Rhubarb

**Old-Fashioned
SAGE**

To flavor the Thanksgiving turkey. **Heavy clumps, 50c; 3 for \$1.35.**

INDIAN SUMMER *Everbearing Red Raspberry*

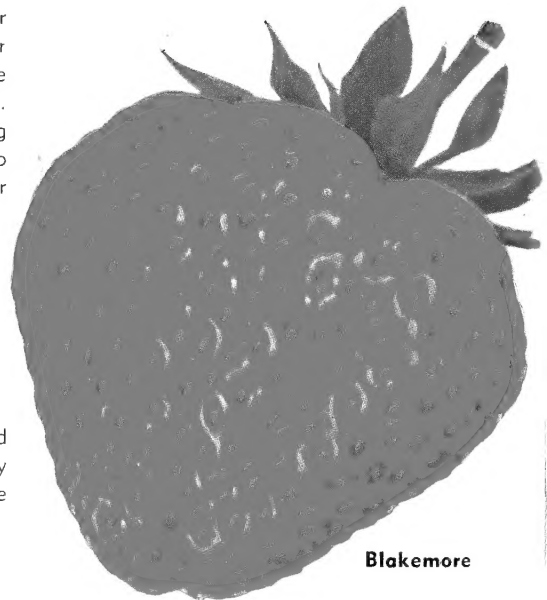
Introduced by New York Experiment Station, it is proving more satisfactory each year as it fruits over wider areas. Many are planting Indian Summer as a one-crop variety, because of its vigor, large size, fine flavored berries, ripening before Chief. Berries are much larger than other everbearing types and of excellent quality. The summer crop ripens very early, the autumn crop from September until frost.

3 for \$0.75 50 for \$ 7.75
6 for 1.25 100 for 14.95
25 for 3.95

BLAKEMORE Strawberry

Extra early, bright red berry. Highly flavored and a tremendous yielder; self-pollenizing. A heavy plant maker. Easy to develop a full, wide row the first season. Fine for quick freezing storage.

25 for \$0.75 200 for \$3.50
50 for 1.25 500 for 6.25
100 for 2.00



Blakemore

STRAWBERRIES and RASPBERRIES for Spring Shipment Only

RASPBERRIES

For Spring Shipment Only.

CUMBERLAND (Black)

(Midseason.) The most widely planted black Raspberry because of its productiveness and quality. Berries are extra large, fine and sweet. 1 yr.

10 for \$1.50 50 for \$5.50
25 for 2.95 100 for 9.90

INDIAN SUMMER

See opposite page.

LATHAM

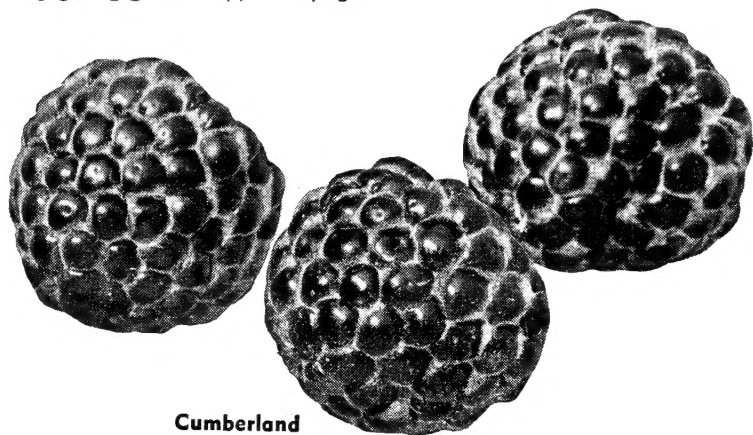
The Famous Late Red Raspberry

This is a superior variety which does well in all sections of the country. It is adaptable to all sorts of soil conditions, climates and sections. Cold weather has no effect on Latham as it originated in Minnesota. A great shipping and canning berry because of its wonderful keeping qualities. Produces fruit of large size, fine color and good flavor. No. 1.

10 for \$1.75 25 for \$3.50 50 for \$6.95 100 for \$11.95

SODUS

See opposite page.



Cumberland



THORNLESS

Boysenberry

Immense, delicious berries with a tangy Raspberry-Dewberry flavor. It is easy to pick these big, juicy berries on these THORNLESS plants. Wonderful served fresh. Makes delicious pies, cobblers or preserves. Planted in the spring they will make six to eight feet of growth the first year and will produce a heavy crop the next year.

10 for \$2.25 50 for \$ 8.75
25 for 4.95 100 for 15.95

ORIGINAL BOYSENBERRIES

Berries of the same immense size and delicious flavor as the Thornless type.

10 for \$1.75 100 for \$10.95
25 for 3.50 200 for 19.75
50 for 5.95

Boysenberries—For Spring Shipment Only.

STRAWBERRIES

Strawberries for Spring Shipment Only.

AROMA. (Midseason to Late.) The favored midseason shipping berry which has made the Ozarks famous as producers of the world's finest berries. Large, firm, delicious berries which stand shipping extra well.

25 for \$0.75 200 for \$3.50
50 for 1.25 500 for 6.25
100 for 2.00

BLAKEMORE. See opposite page.

MINNESOTA 1166. See front cover.

SENATOR DUNLAP. A very popular berry noted for dependability and productiveness. A medium sized, deep glossy red berry of rich, sweet flavor and very good quality.

25 Plants 50 Plants 100 Plants
Prices ... \$0.85 \$1.45 \$2.75

NEW ROBINSON. Outstanding new variety. Scarlet-red to the core; extra large, firm, juicy. Bears over long season. Heavy plant maker. Early; good shipper.

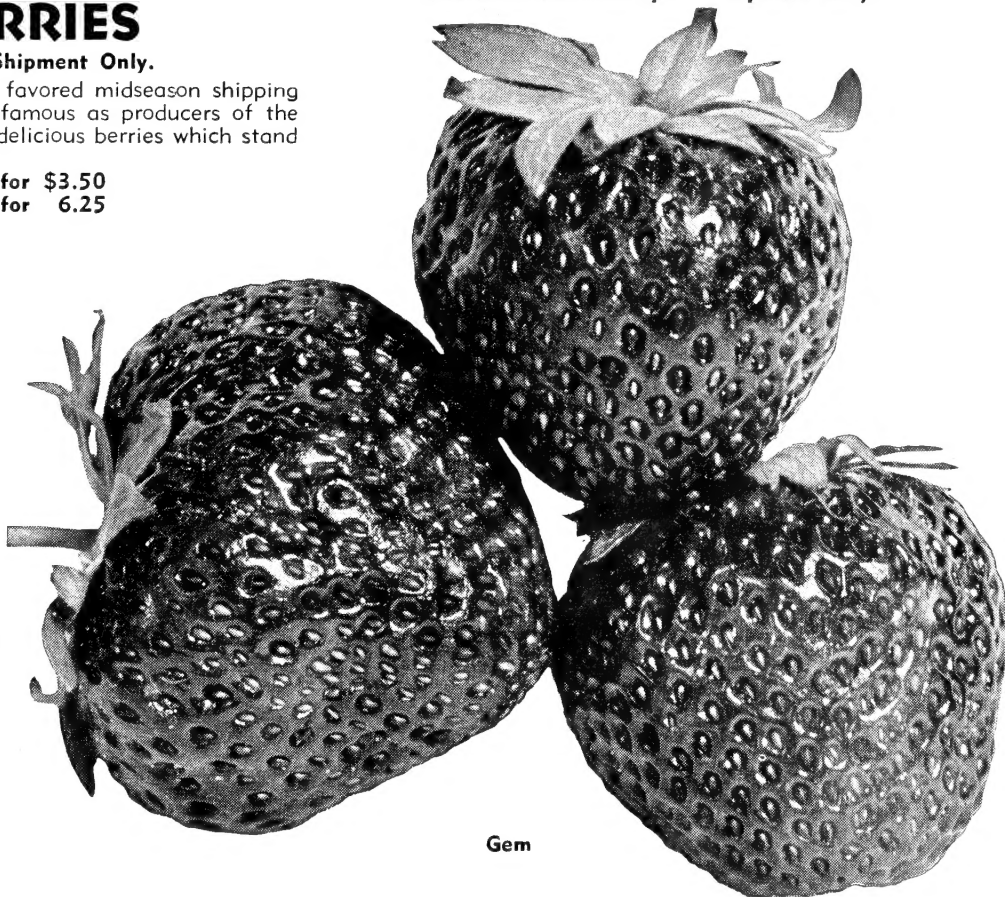
25 50 100 200
Prices ... \$1.10 \$1.75 \$2.95 \$5.50

GIANT GEM. Everbearing Strawberry. By its outstanding performance, Giant Gem is now the leading Everbearing Strawberry. Very productive. Bright red berries are large, good quality and ripen evenly. They will bear this summer, 90 days after planting. Next year, they will bear spring, summer and fall. For spring shipment only.

25 for \$1.50 100 for \$4.95
50 for 2.75 200 for 8.75

PROGRESSIVE. Everbearing. Small berry but the finest flavor of any berry grown; heavy reproducer, hence you have no difficulty in making a row. This variety fruits all summer. One of the best everbearers for home use.

25 for \$1.50 100 for \$4.95
50 for 2.75 200 for 8.75



Gem

NEOSHO PEACHES BIGGER and BETTER

New and improved varieties of Peaches have been the biggest forward step in the nursery business. **Improved quality** and appearance mean ready sale at higher prices. **Improved hardiness** means heavy crops year after year. Plant Neosho trees for greater profits. There is always a heavy demand for our improved varieties, so please send in your orders early. We do not like to disappoint any of our customers.

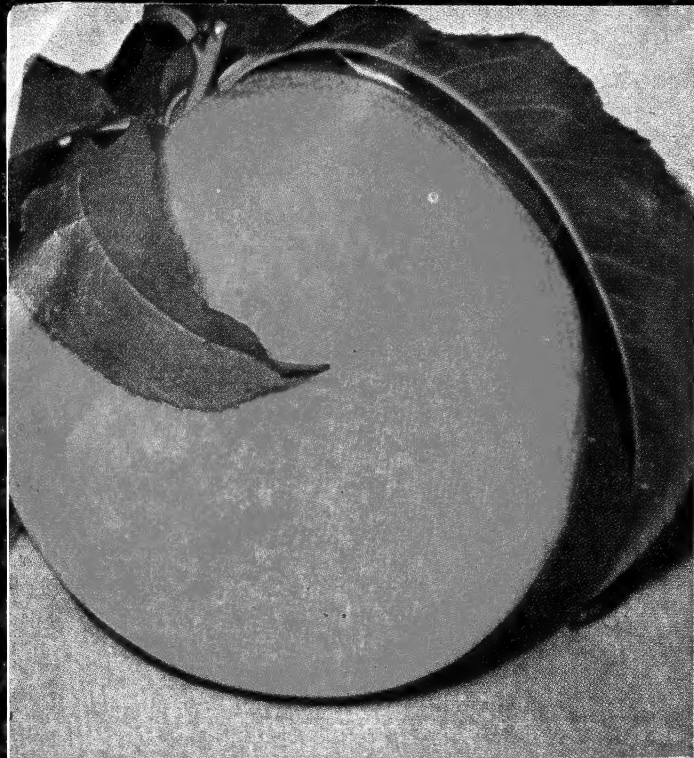
BELLE OF GEORGIA

(White Freestone.) (Midseason.) An unusually handsome large Peach. Creamy white blushed with red; good quality. A favorite with commercial growers. Very hardy, vigorous and productive. Ripens August 1st.

Exeter, Mo.,
April 10, 1943.

Thirteen years ago I purchased from you 60 Belle of Georgia peach trees at a cost of \$18.00. I have kept accurate records on these trees during these past thirteen years and have harvested \$3,157.00 worth of fruit off of them.

A. L. WALKER.



Hale-Haven

HALE-HAVEN

A magnificent cross between the wonderful quality of J. H. Hale and the hardiness of South Haven. Originated at Michigan Experiment Station. A most **desirable commercial variety**, steadily gaining favor because of wonderful size, color and shipping qualities, hardiness of bud and vigor of tree. A profit-making variety you cannot afford to overlook.

REDHAVEN

A smooth-skinned almost fuzzless early yellow freestone Peach completely encompassed with brilliant red. Ripens uniformly early in July. Tree is vigorous and bears so heavily fruit should be thinned to increase size.

ALTON

This Peach in our own orchard has proven one of the hardiest, most profitable of the Belle of Georgia type, ripening about half way between Red Bird and Elberta. It is a semi-cling, white Peach with beautiful red blush. **You'll have a crop of Altons whenever seedlings bear.** Ripens about July 15th. The tree is strong, stocky, good grower, well-branched, and it is an extremely good, regular bearer. All in all, the Alton is a money-maker for the farm or home.



Belle of Georgia

CHAMPION

(White Freestone.) (Midseason.) An exceptionally high quality, attractive, hardy white Peach. It has a peculiar honeyed sweetness; ideal for home use and local markets. Ripens August 1st.

Dolores, Colo.,
Jan. 19, 1945.

I received the order of trees last spring in good condition. They are the finest trees I ever saw, and they looked like they had real nursery treatment. Only lost 4 out of 198 which was not my fault or the nursery's fault. It was just one of those things. I intend to send for trees for several years to come and advise all my friends and neighbors to send to Neosho, too. The State of Colorado would be better if they all had Neosho trees. There is "growing satisfaction" in your trees.

Yours truly,
BURL LISENBURY.

SEE FOLLOWING PAGE FOR

BEAR YOUNG . . . YIELDS of LUSCIOUS FRUIT

PEACH PRICES

	Each	5 (Each)	25 (Each)	100 (Each)
Super X	\$1.75	\$1.65	\$1.50	
11/16 in., 5-6 ft.	1.35	1.25	1.10	.95
9/16 in., 4-5 ft.	1.00	.95	.85	.80
3-4 ft.	.75	.70	.65	.60
2-3 ft.	.60	.55	.50	.45

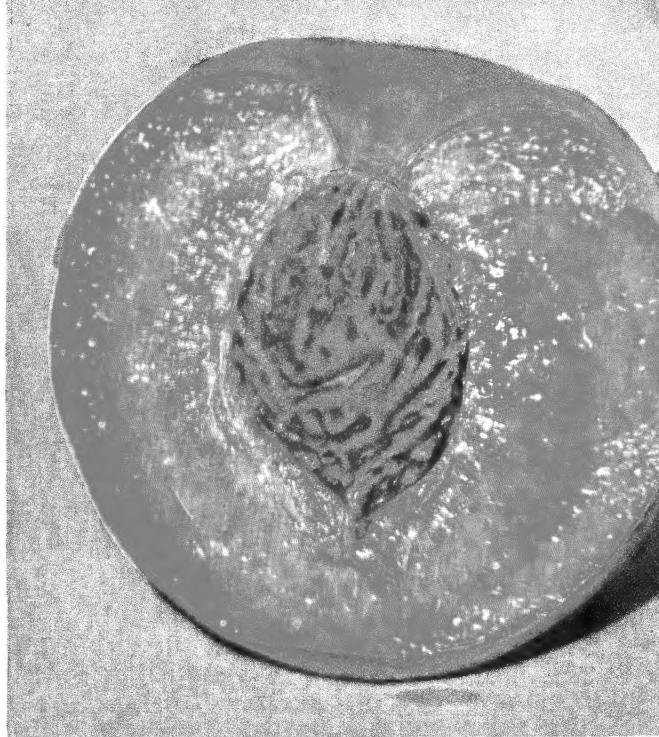
JUNE BUDS (See next page for varieties)

	25 (Each)	100 (Each)	250 (Per 100)
18-24 in.	\$0.40	\$0.35	\$32.50
2-3 ft.	.50	.45	42.50

PEACH SEEDLINGS

For Fence Rows, Windbreaks and Home Gardens.
Peach Tree Grown from Seed.

	10	50
18-24 in.	\$1.98	\$ 7.95
2-3 ft.	2.50	9.95
3-4 ft.	3.50	13.95



Early Elberta

J. H. Hale



NEOSHO HALE

(Yellow Freestone.) (Midseason.) Very large in size; beautiful yellow overlaid with red, and has a firm, fine-grained, yellow flesh of good quality. It colors up a week before maturity. Ripens 3 to 7 days ahead of Elberta. Very firm, solid meated. Stands long shipment. Brings highest prices on every market.

GOLDEN JUBILEE

A beautiful yellow freestone Peach ripening 25 days ahead of Elberta. Good size and quality. Originated by New Jersey Experiment Station. **One of the best shippers** of the early Peaches. Tree vigorous, blooms later and is hardier than most other varieties. Why not try a few Golden Jubilee trees this year . . . raise these hardy, yellow freestone Peaches that ripen 25 days ahead of Elbertas.

NEOSHO EARLY ELBERTA

Our own special strain of Early Elberta that we have fruited for years. Ripens 5 days ahead of Elberta. A smooth-skinned Peach, yellow background with crimson blush.

Golden Jubilee



NEOSHO ELBERTA

(Yellow Freestone.) (Midseason.) The most widely planted commercial Peach. Very large, golden yellow. Tree is very productive, yielding large quantities of uniform, highly colored fruit. Ripens August 10th.

RED GAGE ELBERTA

A wonderful improved bud sport of the Elberta Peach which we can recommend most highly. Ripens 2 to 3 days after Elberta. Is of wonderful size and improved color. Most outstanding feature of this Peach is its **resistance to disease** and hardiness in bud; crops every season.

LATE ELBERTA

(Yellow Freestone.) A large yellow Peach with red cheek, of Elberta type, ripening last of August, extending the Elberta season 20 days.

ADDITIONAL PEACH VARIETIES

NEOSHO PEACH TREES

Bear Early - Produce Heavy Crops - Hardy



Bundle of Well-Grown June Bud Peach

FRANKS. This Peach highly recommended by Missouri Experiment Station, has proven hardiest and most profitable Peach on their grounds. Fine flavored, large yellow cling covered with red; ripening 5th of September. Clings always make good market Peaches. The fruit is beautifully blushed, firm, rich, most delicious in flavor. You will find the Franks a very superior Peach because of its great size, beautiful color, high quality, and high production.

FAIR'S BEAUTY. Hardiness, great beauty, high quality recommend this Peach for all sections. Unrivalled as an early canning variety. An early Peach following Golden Jubilee 3 to 5 days. Tree vigorous, spreading, very hardy in bud, often producing a crop when other varieties are winter-killed. Fruit is medium to large in size, skin a deep golden yellow blushed with bright red, flesh is firm, tender, melting and juicy. Freestone, clinging slightly when the Peach is hard ripe.

JUNE BUD PEACH TREES

Though our supply is quite limited, we offer at attractive prices the following June Bud Peach Trees to commercial growers. Get your order in early as our supply will not last throughout the season.

Early Elberta	Hale-Haven
Elberta	J. H. Hale
Champion	Golden Jubilee
Fair's Beauty	Red Bird

	PRICES		
	25	100	250
	(Each)	(Each)	(Per 100)
18-24 in.	\$0.40	\$0.35	\$32.50
2-3 ft.50	.45	42.50



SUPERB NEOSHO HALE PEACHES at their best as grown by Geo. Edrington, Osceola, Arkansas. Many specimens measured nearly 4 inches in diameter. That's less than a dozen Peaches to the yard. Mr. Edrington has 500 trees, some of which produced 10 bushels to the tree in 1943, and with Peaches selling from \$6.00 to \$8.00 per bushel, that makes a pretty fair income per acre.

A Fair's Beauty Heavy with Fruit

HEATH CLING. (White Clingstone.) (Very late.) Best to preserve or pickle whole. Exceptionally good keeper. Ripens September 20th.

INDIAN BLOOD. (Clingstone.) (Late.) An old-fashioned favorite of fine flavor. Flesh is blood-red color.

MIKADO. The earliest yellow Peach of real quality and flavor. Ripens July 1st. Extra large, shaped and colored like Elberta. Very hardy in bud and a heavy producer. Brings highest prices on the market. Cling.

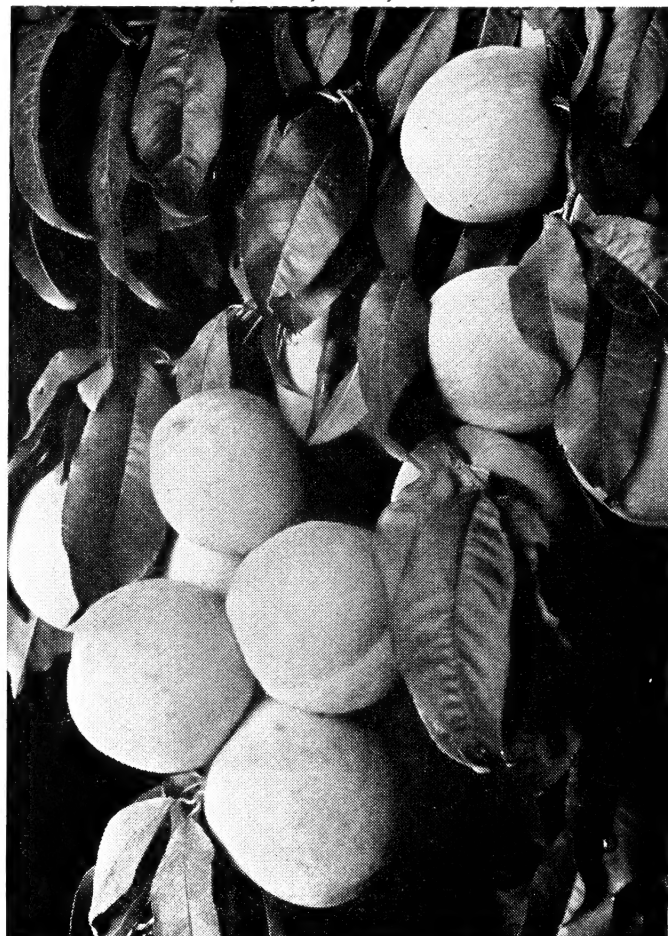
RED BIRD. (Semi-Clingstone.) An unusually large, early, commercial variety. Very firm and ships well. Creamy white covered with bright red; a most handsome Peach. Ripens July 1st.

LATE CRAWFORD. (Yellow Freestone.) (Late.) High quality, scarcely equalled in richness of flavor. Adaptable to a wide range of soil and climate. Ripens August 18th.

POLLY. A variety which has produced with good result as far north as Minnesota and the Dakotas. A creamy white freestone with red blush. Early.

PEACH PRICES

	5	25	100
	Each	(Each)	(Each)
Super X	\$1.75	\$1.65	\$1.50
11/16 in., 5-6 ft.	1.35	1.25	1.10
9/16 in., 4-5 ft.	1.00	.95	.85
3-4 ft.75	.70	.65
2-3 ft.60	.55	.50



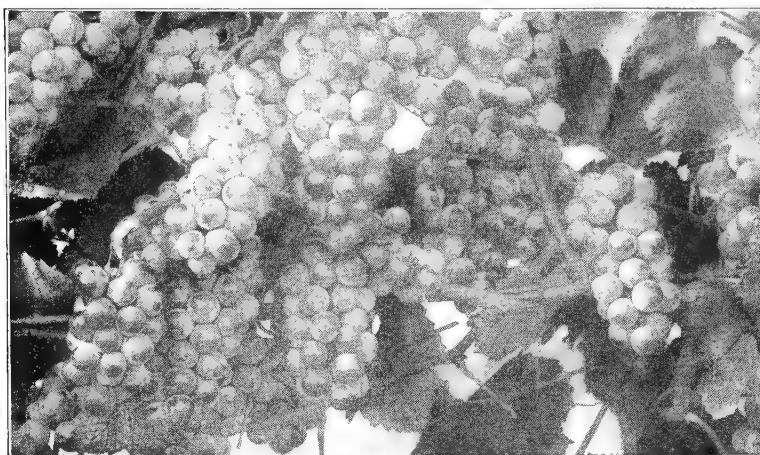
NEOSHO GRAPES

Bear Every Year

Easy to Grow—High Quality

Wholesome—Healthful

Appetizing—Last a Lifetime



A Four-Year Sheridan—Ripens After Concord

White Varieties

DIAMOND. It is the hardiest, most productive and vigorous of the green Grapes. It deserves a high place among the best for commercial and home vineyards. Blooms midseason.

NIAGARA. The most widely planted green Grape. Larger bunches and berries than Concord, as good, or better quality. Productive, vigorous, adaptable. Ripens about with Concord. Blooms midseason.

PORTLAND. Earliest of varieties to ripen. Produces a large, white fruit with spicy and luscious flavor. A very hardy, popular, money-making variety. Usually ripens a few days ahead of Fredonia. The amber-white color of the fruit makes it one of the most popular varieties.

Red Varieties

AGAWAM. The most widely grown of the red Grapes. Large, rich, sweet and aromatic. Ripens after Concord.

CACO. We consider this Grape one of the best varieties. The fruit is very large, rich and sugary, with a delicious melting flavor. The hardy, vigorous vine that assures the grower extra profits. Vines bear young, heavily and regularly. Ripens in August.

DELAWARE. The standard of quality; the best table Grape. Unusually hardy; usually bears abundantly. Blooms rather late.

Blue Varieties

CAMPBELL EARLY. Bunch and berry are large; high quality. Ripens about 2 weeks before Concord. Blooms midseason.

CONCORD. The most widely planted Grape. Superior in hardiness and productivity and regularity in bearing, and in ability to withstand disease and insects. The leader for making Grape juice.

FREDONIA. A new Grape which experts and most growers say will soon become the leading black Grape in America. It ripens early, 10 days before Moore's Early. Berries are large, very juicy, delicious flavor. Vigorous, productive—unusually hardy.

MOORE'S EARLY. The most widely planted early commercial Grape. Ripens 2 weeks earlier than Concord. Good quality. It is best described as an early Concord. Blooms midseason.

SHERIDAN. A new blue-black Grape that ripens a week after Concord. It has an even sweeter, richer flavor. Berries are very large, and vine is an unusually heavy bearer. A choice variety.

Grape Prices

NEOSHO SUPER X. 2 yr. No. 1.
Our biggest husky, well-rooted vines that will make quick growth and often bear the first year after planting.

Each .. \$0.45	10 for .. \$3.75
4 for .. 1.60	25 for .. 8.25

NEOSHO. 1 yr. No. 1.
Thrifty, well-rooted 1 yr. vines.

Each .. \$0.35	10 for .. \$2.95
4 for .. 1.20	25 for .. 6.25

SPECIAL!

	100	300
CONCORD:		
2 yr. No. 1	\$24.75	\$69.50
1 yr. No. 1	19.50	55.00
1 yr. Com'l	16.95	45.00

FREDONIA:	
2 yr. No. 1	27.50
1 yr. No. 1	21.50
1 yr. Com'l	18.95

MOORE'S EARLY:	
2 yr. No. 1	27.50
1 yr. No. 1	21.50
1 yr. Com'l	18.95



Fredonia
Big Berries—
Firm bunches
Heavy producer
Ripens early

Monroeville, N. J.,
April 20, 1945.

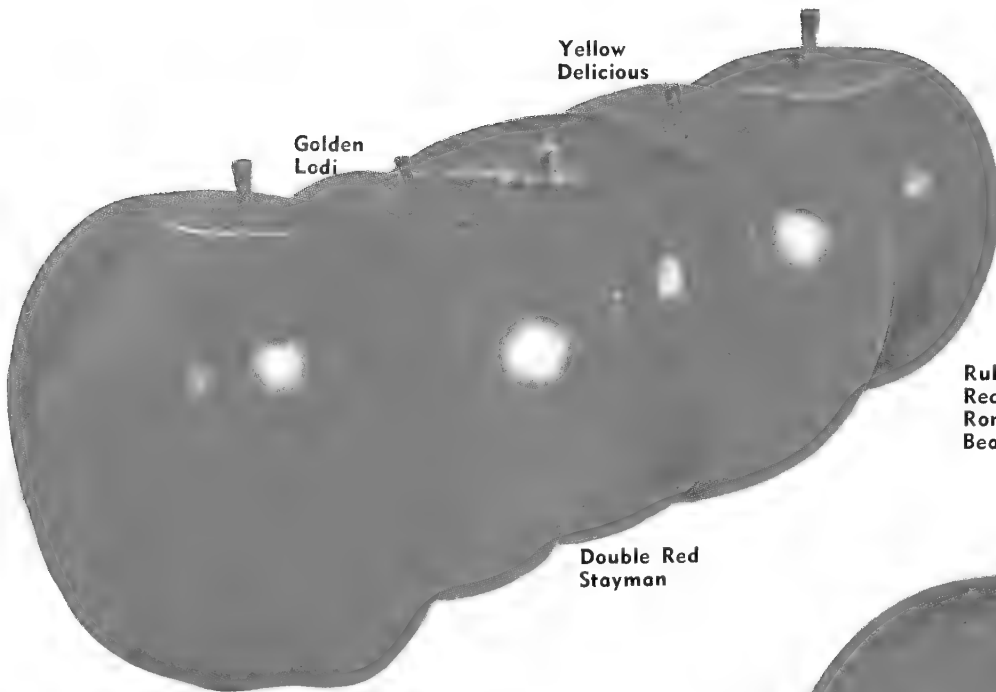
Some time back when your catalog arrived I thought, my what a nice, sensible catalog. Now I know you are that way to deal with. The plants arrived yesterday in good shape, such thrifty ones with dandy root growth. Thanks for the extra strawberry plants; appreciate them very much.

Respectfully yours,

MRS. ELDEN TRUMBULL.

APPLES

- *Bear Young*
- *Giant Size*
- *Rich Color*



Golden Lodi

Yellow Delicious

Ruby Red Rome Beauty

Double Red Stayman

Turley

NEW OUTSTANDING VARIETIES

THESE varieties are considered the finest, **heavy producing** strains, and Neosho Nurseries have always been one of the leaders in the production of **hardy**, money-making Apple tree varieties. You buy with confidence when you buy Neosho Apple Improved Varieties. Plant these summer, fall and winter Apples. Then you can have Apples almost the year around.

BLOOD-RED DELICIOUS. Has all of the good qualities of the common Delicious, but colors out a deeper red, and 2 to 3 weeks before the common Delicious begins to take color. This means earlier profits and bigger profits for the grower because earlier picking, earlier marketing, and more **extra fancy grade**, with little or no windfalls, and color to get the best prices.

DARK RED JONATHAN. You increase your profits when you plant Dark Red Jonathan. This is an improved strain of Jonathan, **and the most profitable Apple obtainable.** The Dark Red Jonathan attains a brilliant red color 2 weeks before ripening, and this, in turn, gains the advantage of higher market prices for the grower. Early marketing also eliminates windfalls.

Dark Red Jonathan



Blood-Red Delicious

DOUBLE RED STAYMAN. Everyone is familiar with the wonderful, early coloring qualities of the Red Stayman. The Neosho Dark Red Stayman is a marvelous improvement over many Stayman Apples; has more color and keeping qualities. It is the solid dark red which makes it a universal favorite.

GOLDEN LODI. New, Improved Transparent. Has been thoroughly tested and meets every requirement of an outstanding early apple for quality, productiveness and profit. A large waxen apple of clear Transparent color but they handle, keep and ship better because flesh is firm and skin thick. **Twice the size of Transparent** and the tree is a vigorous spreading grower. It ripens July 1st.

RUBY-RED ROME BEAUTY. Identical with the Rome Beauty except that it colors earlier and has more red color. Hence, a hardy, vigorous Apple tree, and is a popular favorite in almost every section of the Apple country.

TURLEY WINESAP. A truly fine quality Apple of a beautiful ruby-red color of the Stayman type. Absolutely does not crack. This is Indiana's greatest gift to the Apple industry and their most precious crop. You, too, will find it a profit maker.

YELLOW DELICIOUS. Popular, big, beautiful golden yellow Apple. Has a wonderful flavor, excellent quality, firm flesh, and ripens fast. Tree begins bearing at a very early age and is a vigorous grower so that a six-year-old tree can have 5 or 6 bushels of apples, and a 15-year-old tree 20 to 25 bushels. Brings highest prices and is in demand on every market.



for Health and Profit

ANOKA—The Old Folks' Apple. The second year, big, full-sized crop; earliest and heaviest bearing Apple. Hardy in all climates; never winter-kills. Can be grown anywhere in the United States. Ripens in August but can be used a month earlier. Apples are good sized, well-formed, beautifully colored. Has proven to be one of the very best early summer Apples for all purposes.

BLACK BEN. (Winter.) The best of the Ben Davis family. It attains a much higher color than Ben Davis or Gano. The tree is hardier, more vigorous and more prolific than Ben Davis. Fruit is large, solid dark red.

CARLTON. A new summer Apple; large, round, attractive dark red. Tender, juicy, sub-acid. Tree hardy, vigorous and productive.

DELICIOUS. (Winter.) Who is not familiar with this popular Apple? Who does not appreciate its unexcelled flavor, its beauty of form, and color, its fragrant aroma? It finds a ready sale at high prices. Tree vigorous, hardy, is fruiting in nearly every state.

GRIMES GOLDEN. Is the best quality and most profitable yellow Apple; a rich golden color, fine flavor and aroma, an ideal dessert Apple and an equally fine cooker. You cannot go wrong on this beauty because it is a definitely profitable Apple, easy to grow, hardy and prolific bearer.

JONATHAN. (Fall.) A grand, good Apple; once tasted, always wanted. Bright solid red; aromatic flavor and juice full of snap and sparkle. Medium size; good to best quality. Bears young; good crops regularly. Fine for home and commercial planting.

KING DAVID. (Fall.) Bears heavy crops year after year. Medium size; very dark, rich garnet-red, showing almost a purplish black on the sunny side. Tree hardy, vigorous grower; bears young. Often used as a filler.

RED DUCHESS. This is a strain of the Duchess. The only difference is that it colors somewhat earlier, and better, which is a big advantage for the commercial Apple grower. Profits are larger because of the earlier marketing quality. Plant a few of these in your orchard this year.

ROME BEAUTY. (Winter.) Large, roundish Apple, handsomely colored and striped with bright red; good quality. Splendid storage Apple; a splendid bearer; blooms late.

STAYMAN WINESAP. (Winter.) Largest of the Winesaps, striped and splashed bright crimson. Splendid quality. Reliable annual cropper.

SUMMER CHAMPION. A late summer or early fall Apple. Large, attractive, red and of fine quality. Tree is hardy and a heavy bearer.

YELLOW TRANSPARENT. (Early Summer.) The best extra early Apple; medium size a beautiful clear yellow; smooth, waxy, brilliant skin. Unexcelled for pies, tarts and apple sauce. Tree extremely hardy, upright, compact grower; often used as a filler; reliable cropper.

YORK IMPERIAL. (Winter.) Bright pin-striped with dark red; fair quality. Its oblique or lop-sided shape is a notable characteristic. A very heavy bearer. Easy to handle. Good keeper in dry storage.

WEALTHY. (Late Summer.) A most dependable and widely planted late summer Apple; bright red striped; medium to large size. Ripens over a long season. Very good quality. Tree upright grower; often used as a filler; very hardy; bears young.

WILSON'S JUNE. (Midsummer.) A deep, solid crimson like a Red June; large, good quality. Hardy, vigorous, very productive, bears young. Most beautiful of its season; good shipper.

WINESAP. (Winter.) One of the oldest and most popular Apples; a good shipper and an exceptionally good keeper in ordinary and cold storage. Splendid bright red, and indistinctly striped with dark purplish red; good quality. Medium size. Hardy; a heavy, regular bearer.

WHETSTONE. The Missouri Fruit Experiment Station put in 40 years time and effort crossing Jonathan and Ben Davis to develop an apple with Jonathan quality, and Ben Davis productiveness and keeping qualities. Out of 600 crosses this apple is their first choice from a profit standpoint. It fills up the barrel or basket with large, high-colored Apples that will hang on the tree to Christmas, if necessary, and keep until spring.

VIRGINIA CRABAPPLE

The finest Crabs for home use, and being a heavy producer of large pink fruit of unusual hardiness makes it a profitable market Crab.



A Picture of 2-Yr. Neosho Trees Taken in June Will Make Fine Sturdy Trees by Fall

Prices All Neosho Apple Varieties

	Each	5 (Each)	25 (Each)	100 (Each)
2 yr., Super X	\$1.75	\$1.65	\$1.50	
2 yr., 11/16 in.	1.35	1.25	1.10	.95
2 yr., 9/16 in.	1.00	.95	.85	.80
	5 (Each)	25 (Each)	100 (Each)	250 (Each)
1-yr. top, 2-yr. root, 4-5 ft.	\$0.90	\$0.85	\$0.75	\$0.70
1-yr. top, 2-yr. root, 3-4 ft.	.80	.75	.65	.60
1 yr. top, 2-yr. root, 2-3 ft.	.65	.60	.50	.45

HARDY VIRGINIA CRAB UNDERSTOCK

for
Top
Working

The Iowa State Experiment Station at Ames, Iowa, have done wonders in improving the hardiness, productivity and early bearing of Apples by top working trees onto Virginia Crab understocks. Hence we offer Virginia Crab in both 1- and 2-year trees.

	25 (Each)	100 (Each)	250 (Each)
1-yr. top, 2-yr. root, 4-5 ft.	\$0.85	\$0.75	\$0.70
1-yr. top, 2-yr. root, 3-4 ft.	.75	.65	.60
1-yr. top, 2-yr. root, 2-3 ft.	.60	.50	.45

Yellow Delicious—Bears Heavy Crops at an Early Age—Brings Top Prices



NEOSHO FAMOUS QUALITY PEARS



New

SEEDLESS PEAR

NEW SEEDLESS PEAR. A new fruit sensation. A pear without seeds or core; all sweet, juicy flesh; a great producer, excellent quality, good size; hardy. Tree bears young; ripens 10 days after Bartlett; self pollenizer. Fruit is a large, beautiful golden yellow with blush. Flesh is tender, sweet, juicy and delicious. Fine to eat fresh and ideal for cooking. We only have 400 of these trees.

2-3 ft.	\$1.75
3-4 ft.	2.00
4-5 ft.	2.35

PEAR PRICES
(Except Seedless Pear)

	Each	5 (Each)
2-3 ft.	\$1.00	\$0.95
3-4 ft.	1.30	1.20
4-5 ft.	1.60	1.50



Douglas

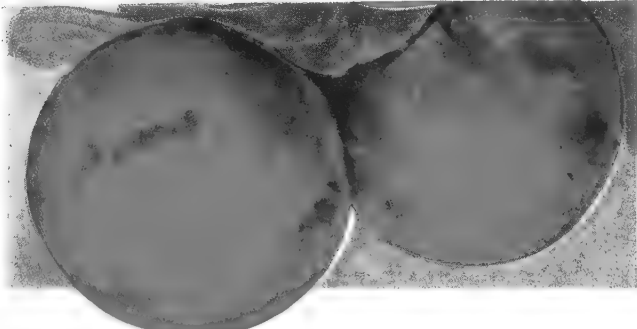
BARTLETT. (Late Summer.) The leading commercial variety, one of the most popular for dessert and canning. Large, clear yellow with blush on sunny side. Flesh is white, fine grained, juicy and sweet. Tree is vigorous, very productive, hardy, bears young. Here in the famous Ozark country the Bartlett has proved one of the most popular money-making varieties. Very juicy, sweet and of highest quality.

POPULAR, HARDY, DOUGLAS PEAR. Douglas is a large, handsome Pear of Bartlett quality that ripens in early fall and comes into bearing the second or third year. Golden yellow flushed with pink, tender, juicy, excellent flavor. Douglas is the outstanding Pear for the Central West. It is blight proof, very resistant to dry weather, and if your bloom is killed by spring frost

will send out a new set of blossoms on the new wood and set a crop of fruit, so you will have Pears every year on Douglas.

KIEFFER. (Winter.) Large, yellow, russeted; flesh white, rather coarse. A market and kitchen variety that succeeds farther south where other varieties fail. Tree hardy, very vigorous, resistant to blight. Blooms early.

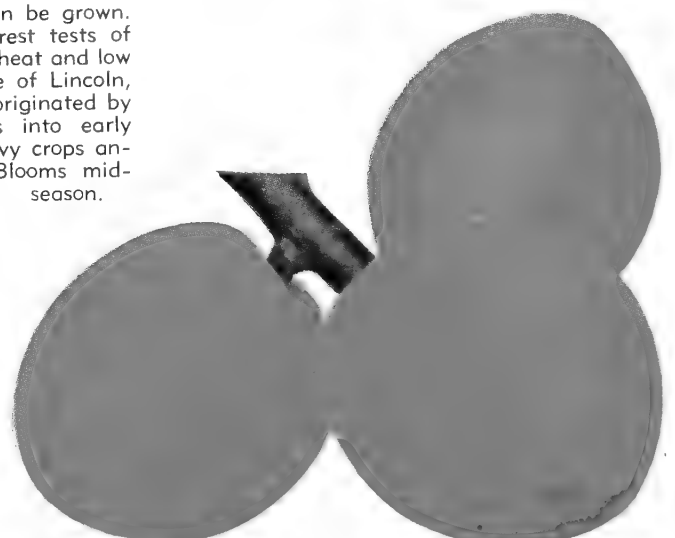
LINCOLN. (Summer.) Large, yellow; quality good to very good; similar to Bartlett but more resistant to blight. Succeeds farther south than Bartlett can be grown. It has stood the severest tests of intense, moist summer heat and low altitude of the climate of Lincoln, Illinois, where it was originated by W. E. Jones. Comes into early bearing and bears heavy crops annually; very hardy. Blooms mid-season.



SURECROP NECTARINES

A cross between Peach and Plum. Has smooth skin like a Plum and seed like a Peach. Flesh and flavor of both Plum and Peach. Quality unusually pleasing. Color beautiful bright red; size about same as medium size Peach. Freestone. Bears after second year.

2-3 ft.	Each, \$1.00; 5 or more, \$0.95 each
3-4 ft.	Each, 1.30; 5 or more, 1.20 each
4-5 ft.	Each, 1.60; 5 or more, 1.50 each



SUPERB APRICOTS

Such delightful luscious fruit as the Apricot really should be planted more than it is, since it ripens just after the early Cherries, and before the best Peaches. Apricots will stand more winter cold than Peaches, although the bloom is more apt to be injured by spring frost. A northern or eastern slope is best so the opening of the buds will be retarded and the danger of frost damage lessened.

2-3 ft.	Each, \$1.00; 5 or more, \$0.95 each
3-4 ft.	Each, 1.30; 5 or more, 1.20 each
4-5 ft.	Each, 1.60; 5 or more, 1.50 each

CHERRIES ~

Easy to Grow—Bear Very Young

SOUR CHERRIES

EARLY RICHMOND. The favorite early bright red May Sour Cherry. Fruit is medium size. A good canner. Tree is medium size. Ripens about a week earlier than Montmorency.

MONTMORENCY. The most widely planted Cherry. Productive and a regular bearer. Colors early before ripe—a distinct advantage for shipping. The fruit is roundish, plump and a beautiful glowing red. It hangs in clusters, making picking easy. The fruit does not crack or rot, even in very hot weather. It hangs on without dropping after

it is dead ripe. The flesh is rich, sprightly and pleasant. A good shipper and a good canner. Does not mash down in the box.



Montmorency

SWEET CHERRIES

BLACK TARTARIAN. Most widely planted Sweet Cherry east of the Mississippi. Beautiful lustrous, purplish black when ripe. Medium size for Sweet Cherry, very good quality. The tree is a very large, vigorous, upright grower. Very productive and regular bearer. Early.

NEOSHO NAPOLEON. This is a select strain of yellow Sweet Cherry which has produced a crop 7 straight years here in Neosho. The best yellow Sweet Cherry. Mellow, sweet flavor. A fancy dessert variety, but is also a good keeper and bearer.

LATE DUKE. A large, heart-shaped, dark red, semi-sweet variety with hardy quality that succeeds well here in the Middle West.

SENECA. Resembles Black Tartarian, but ripens 2 weeks earlier; rich sweet flavor.

A Sweet Cherry planted alone is not likely to bear fruit, because it is self-sterile. Plant a Black Tartarian with any other Sweet Cherry.



Jumbo PLUMS

ABUNDANCE. (Early.) A pink-red Plum. Medium size. Flesh is yellow, sweet, aromatic. Tree is a vigorous grower.

AMERICA (Improved Gold). The best of Burbank's American Hybrids; unusually attractive golden yellow with red cheek. Bears at an early age. Enormously productive of high quality, sweet, juicy, solid meated large Plums. Phenomenally free from rot; tree large, vigorous, extremely hardy. Ripens July 20th.

BRUCE. One of the heaviest producers. Ripens July. Perfectly hardy.

BURBANK. (Midseason.) A dark red roundish Plum, flesh is a deep yellow, firm, very juicy, and aromatic.

MUNSON. A hybrid cross with America. Earliest, ripening last of June. Large, yellow, good quality, tender, juicy, sweet. Bears young, producing large crops.

PRESIDENT PLUM. The largest of all the Plums. A beautiful dark purplish black with a heavy bloom. Ripens late, 10th of September. A wonderful rich flavored freestone, solid flesh Plum. A fine, profitable market Plum, and splendid for home use as well.

STANLEY PRUNE. Crop second year, ripens 10 days ahead of other Prunes. Beautiful purple-blue skin, sweet golden flesh. Freestone. Requires but little sugar and colors deep wine-red when canned. Retains its shape and skin; does not fade.

HANSEN HYBRIDS

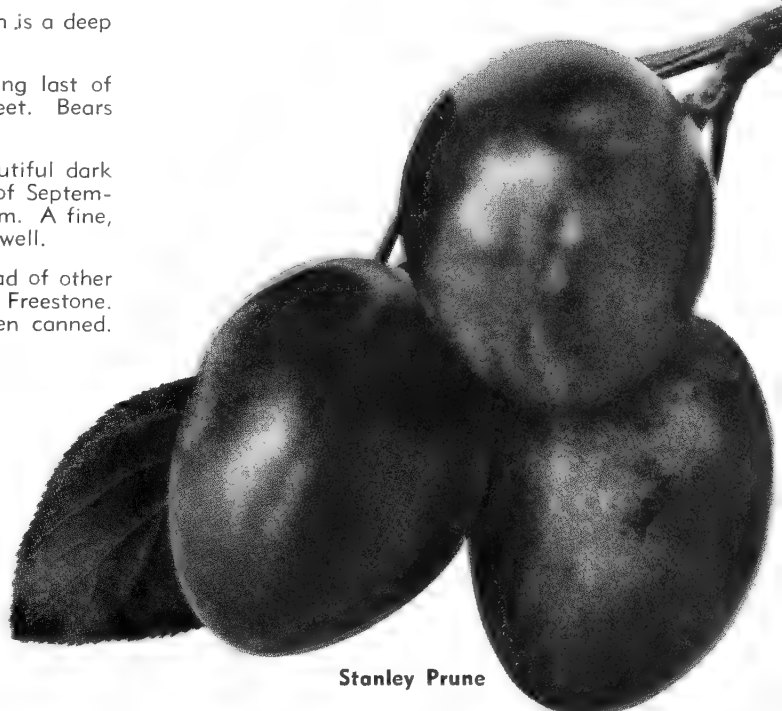
Hansen Hybrid Plums are dwarf growing, extra hardy, trees that come into bearing the first year after planting. Fruits in great profusion.

SAPA. Bears First Year. (Hansen Hybrid.) A large size purple Hansen Hybrid, with purple flesh full of rich juice of fine flavor. Bears heavy crops annually and begins fruiting the first year after planting. Succeeds everywhere, ripens middle of July. Fine for canning.

WANETA. A Hansen Hybrid. Exceptionally hardy, withstanding extremely hot and dry weather. Often bears second year. Color purplish red, 2 inches in diameter.

SOUR CHERRY PRICES			
	5	25	
	Each	(Each)	(Each)
2-3 ft.	\$1.00	\$0.95	\$0.90
7/16 in., 3 ft. . .	1.20	1.15	1.10
9/16 in., 3½ ft. .	1.50	1.40	1.35
11/16 in., 4 ft. .	1.75	1.65	
SWEET CHERRY			
	5	25	
	Each	(Each)	(Each)
2-3 ft.	\$1.10	\$1.00	
3-4 ft.	1.50	1.40	
4-5 ft.	1.75	1.65	

PLUM PRICES		
	Each	5 (Each)
2-3 ft.	\$1.00	\$0.95
3-4 ft.	1.30	1.20
4-5 ft.	1.60	1.50



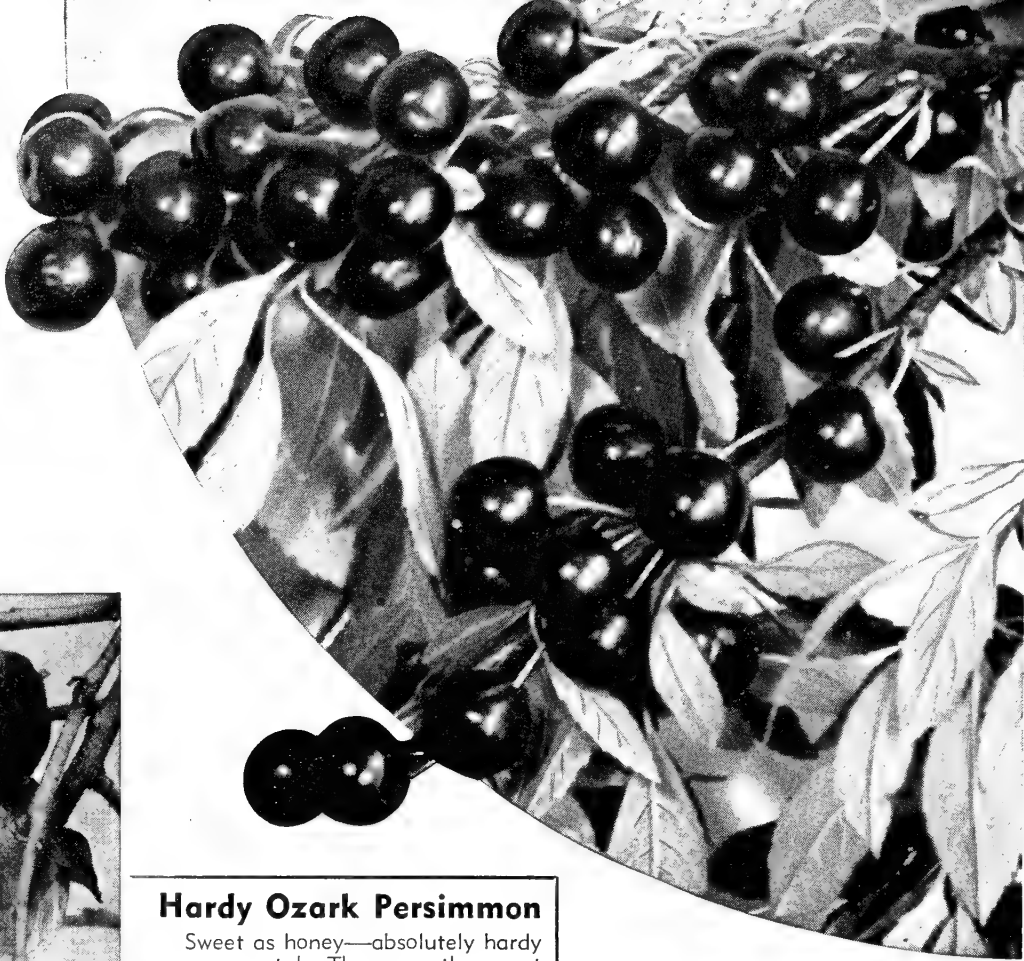
Stanley Prune

The New KOREAN BUSH CHERRY

The new quick-bearing Cherry. Easy to grow; sure to produce; highly productive; good flavor. Hardy everywhere.

Perfectly hardy ornamental shrub with white blossoms followed by rich red fruit which is fine for making jam, jelly and pie. Plant two or more for pollination.

Heavy, well branched, 2 yr., 2 for \$1.98; select size, 2 for \$1.69.



Hardy Ozark Persimmon

Sweet as honey—absolutely hardy—ornamental. These are the sweet native Persimmons and are perfectly hardy anywhere that Peaches will grow. They make a compact ornamental tree and will bear practically every year.

4-5 ft., \$1.75 each

5-6 ft., 2.25 each

New Hormone

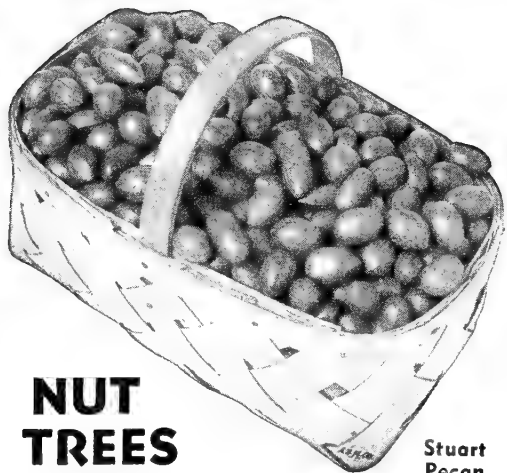
In dust form to aid transplanting and insure quick, strong growth.

Staleymone

For use on all plants, seeds, trees and grass. The first such product at a reasonable price, and one we have tested on our own grounds with amazing results. Simple to use; directions with each package. Plants start quicker, grow faster, bear sooner.

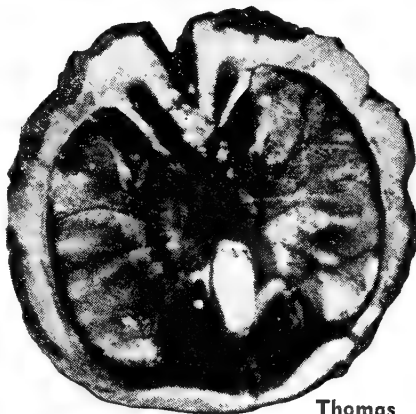
1-lb. package \$1.00

5-lb. package 2.50



NUT TREES

Stuart
Pecan



Thomas
Black Walnut

Thomas Black Walnut

Now you can have an improved, grafted Black Walnut, which is giant size and kernels come out in halves. Thomas is the fastest growing and produces the largest nuts. It bears very young, generally next year after planting. A mature tree will produce 15 to 40 bushels of nuts which sell from \$4.00 to \$10.00 per bushel. The nuts are immense size and crack easily. A bushel of nuts crack out 10 to 12 pounds of meats. Meats are of delicious flavor. Will grow anywhere.

2-3 ft., each, \$2.50 3-4 ft., each, \$3.00 4-5 ft., each, \$3.50

STUART PECAN. Hardest of the paper-shell varieties. Can be grown as far north as Kansas City. Nut is large, long, thin-shelled, of excellent quality. Tree is ornamental and of fairly rapid growth. A very profitable variety for commercial planting. Plant 40 feet apart.

2-3 ft.	Each	\$2.50
3-4 ft.		3.00
5-6 ft.		3.95

HAZELNUT. Round, sweet kernels, easily removed and delicious for many uses. Plants are ornamental with deep green foliage and compact, bushy habit of growth. Fruits freely. Plant a group of them in the corner of your yard.

2-3 ft.	Each	4	\$1.25	\$4.49
3-4 ft.		4	1.60	5.85



Hazelnut

MULCH WITH PEAT MOSS

To conserve moisture, keep down weeds, winter protection.

60-lb. bag, \$1.95; 120-lb. bag, \$3.50.

PLANT HEALTH

Kill Insects, Worms, Fungus NEOSHO All-Purpose Dust

Our own special formula. Kills eating insects, such as cutworms, bag worms and canker worms. Controls fungous diseases, such as mildew and black spot. Controls sucking insects, such as aphids and red spider.

Keeps your Shrubs, Roses, Evergreens and Perennials in healthy condition. Remember, an ounce of prevention is worth a pound of cure. Start your dusting when leaves appear and continue at regular intervals. Will adhere to foliage better if applied when foliage is damp.

1 1/2 lbs., 75c; f. o. b. Neosho.

MONEY - SAVING SPECIAL OFFERS



ALL-SEASON APPLE SPECIAL No. 5

Ripe fruit from June till October.

- | | |
|-----------------------|----------------------|
| 1 Yellow Delicious | 1 Yellow Transparent |
| 1 Blood-Red Delicious | 1 Dark Red Jonathan |
| | 1 Turley Winesap |

Five 3-4 ft. trees, postpaid for \$2.39

Regular Value, \$3.45

FREE with This Offer—1 Large Yellow Juicy Freestone Peach, 2 to 3 ft.

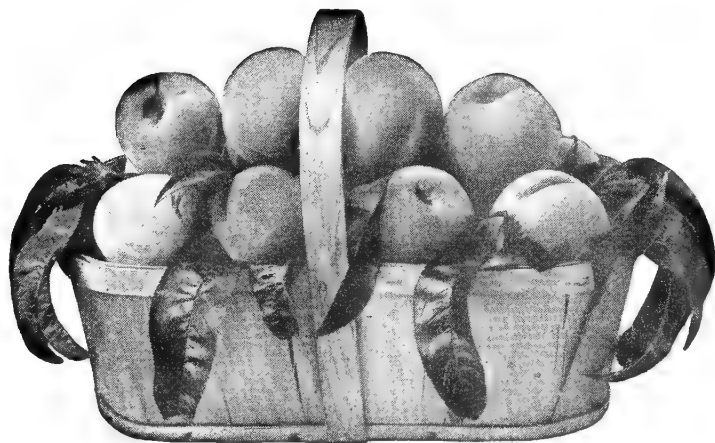
BERRY SPECIAL No. 12

- 3 Thornless Boysenberry
- 3 Cumberland Raspberry
- 3 Eldorado Blackberry
- 3 Red Raspberry

All 12 plants postpaid for \$1.98

Regular Value, \$2.87

FREE with this offer: 1 Grape Vine, Delicious. Large purple variety.



ALL-SEASON PEACH SPECIAL No. 2

Fresh Peaches ripe from your own trees from July 1st to mid-August.

- | | | |
|------------------|--------------|------------|
| 1 Golden Jubilee | 1 Elberta | 1 Red Bird |
| 1 Champion | 1 Hale-Haven | |

Five 2-3 ft. trees, postpaid for \$2.29

Regular Value, \$3.25

FREE with This Offer—1 Yellow Delicious Apple Tree

ALL-SEASON STRAWBERRY

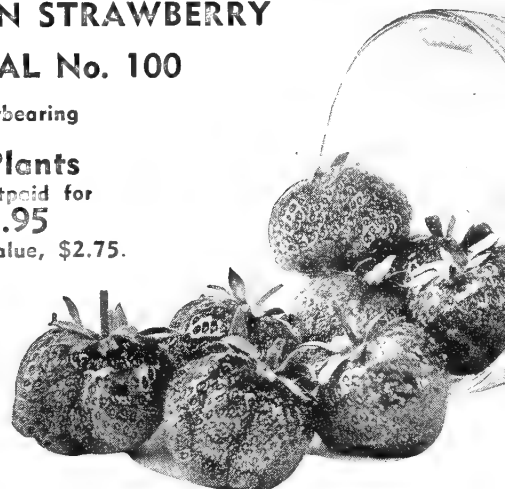
SPECIAL No. 100

- 25 Progressive Everbearing
- 50 Blakemore

75 Plants

All Postpaid for **\$1.95**

Regular Value, \$2.75.



Please Order Specials by Number

Have Beautiful Green Velvety Lawns by Using *Neosha* SUPERIOR LAWN GRASS SEED

All our seed mixtures are treated with the new, sensational Hormone which gives better germination and better root system.

NEOSHO SUPERIOR MIXTURE

For a permanent lawn. This is composed of finest quality seeds mixed according to our own formula. 1 lb., 69c; 3 lbs., \$1.95; 5 lbs., \$2.95.

NEOSHO DENSE SHADE MIXTURE

For lawns which are either partially or completely shaded. 1 lb., 79c; 3 lbs., \$2.19; 5 lbs., \$3.50.

NEOSHO QUICK LAWN MIXTURE

For new lawns where quick germination and coverage is desired. 1 lb., 59c; 3 lbs., \$1.49; 5 lbs., \$2.25.

KENTUCKY BLUE GRASS

This is finest quality, re-cleaned seed, weighing 24 lbs. to the bushel. Most ordinary Blue Grass only weighs 16 lbs. to bushel. 1 lb., 79c; 3 lbs., \$2.19; 5 lbs., \$3.50.

DOMESTIC or WINTER RYE

An annual grass for quick coverage or to use on Bermuda lawns for winter effect. 1 lb., 35c; 3 lbs., 95c; 5 lbs., \$1.49.

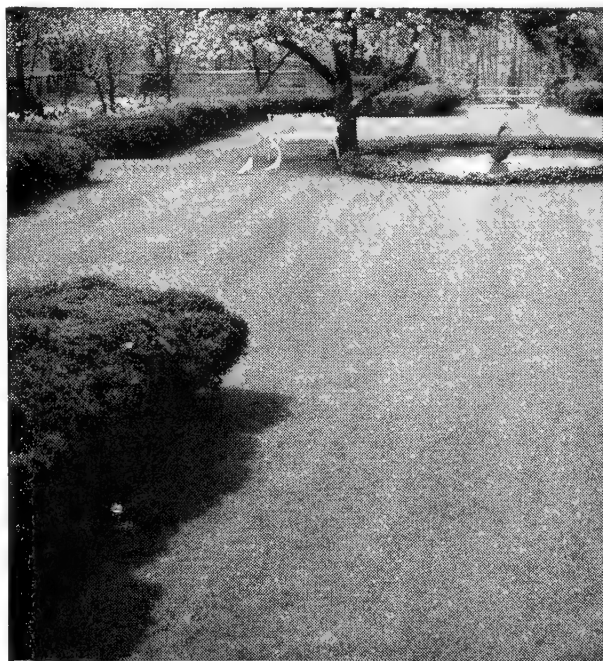
BERMUDA GRASS STOLONS

For spring shipment only. Per bu., \$2.50.

VIGORO

Victory Garden Fertilizer
F. O. B. Neosho

100-lb. bag	\$3.50
50-lb. bag	2.25
25-lb. bag	1.40
10-lb. pkg.80
5-lb. pkg.50





Paul's Scarlet Climber



Hedge of Golden Salmon Baby Rose

Everblooming **CLIMBING ROSES**

SUPER X GRADE: Each \$1.10; 4 for \$3.95.

CLIMBING KAISERIN AUGUSTA VICTORIA. Soft pearly white shading to light lemon in center. Everblooming.

CLIMBING TALISMAN. Two-toned red and gold; everblooming.

CLIMBING PIERRE S. DU PONT. Deep golden yellow, semi-double with delicate fragrance. Everblooming.

CLIMBING PINK RADIANCE. A beautiful two-toned vivid pink fragrant monthly bloomer.

CLIMBING RED RADIANCE. The same favorite in climbers that it is in the bush Rose. Unusually thrifty grower of cerise-scarlet. Everblooming.

401 No. Wall, Joplin, Mo.,
July 28, 1944.

I am writing to let you know how well pleased I am with the Roses I received from you this spring. I planted the Roses May 13th (10 of them). On June 10th I cut about one-half dozen Roses. The bushes have made a nice growth and we have had Roses every day since they started blooming.

MRS. H. H. GOODWIN.



Climbing P. S. DuPont



←
**Climbing
Talisman**

**Blooms all
summer**

→
**Climbing
Pink Radiance**

**Blooms
all
summer**





Else Poulsen

Everblooming

BABY ROSES

Brilliant Blooms All Summer. Easy to Grow—Hardy.

Fine for cemetery planting, in front of evergreens, in solid beds, in fact anywhere that you want constant bloom from June until frost. They require little attention and grow anywhere. Will bloom this year and for many years to come.

SUPER X GRADE: Each, \$1.10; 4 for \$3.95; 9 for \$7.95
SELECT GRADE: Each, \$0.95; 4 for \$3.60; 9 for \$7.20

ELSE POULSEN. Great clusters of apple-blossom-pink flowers. Hardy, permanent, always in bloom—grows 24 to 30 in. tall.

LAFAYETTE. Cheerful, cherry-red flowers from spring until frost—a profuse bloomer. Grows 18 to 30 in. tall.

GOLDEN SALMON. Sparkling orange with red and salmon tones. This new Rose makes a compact, bushy plant with great clusters of flowers throughout the season.

IDEAL. Brilliant garnet-red flowers all season, on a bushy compact plant 18 to 24 in. Rich, dark green foliage.

PERLE D'OR. Charming light pink buds shading to yellow at base. Good compact habit and a profuse bloomer.

Prize-Winning PATENTED ROSES

MME. CHIANG KAI-SHEK. (Patent applied for.) A Rose so exquisite that mere words cannot describe it nor any picture do it justice. Superb pointed buds of soft yellow and as the petals gracefully unfold, the outer petals become a rich ivory, with the center a clear canary-yellow. A full, double Rose with 35 petals, freely produced on fine stems for cutting. It has a subtle fragrance that enchants you. One of the world's great Roses. An All-America Rose Selections winner for 1944. Each, \$2.00.

HEART'S DESIRE. (Patent No. 501.) An All-America winner and destined to become one of the greatest Roses of all time. The buds are absolutely perfect and they open into large, graceful, double flowers on long stems, fine for cutting. The color is a bright yet soft crimson-scarlet that does not fade. So fragrant, a small bouquet perfumes a room. A healthy, hardy, vigorous grower that improves with age. Each, \$1.75.

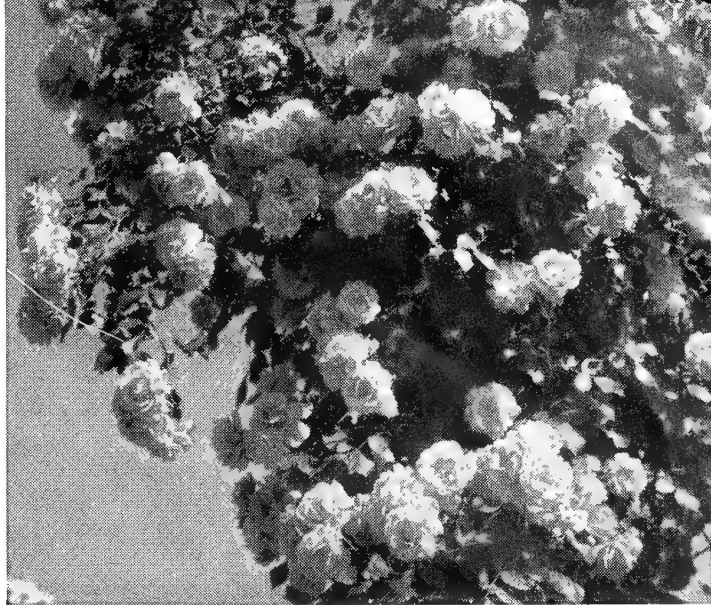
DOUGLAS MacARTHUR. (Patent No. 581.) A new Rose that asks no favors and requires no coddling. Hardy, vigorous with dark green, healthy foliage, it produces its lovely flowers all through the season. The long buds open slowly into glorious flowers of cerise, gold and delicate salmon. Truly a flower of superb beauty. Each, \$1.75.

CRIMSON GLORY. (Patent No. 105.) A deep crimson with a velvety sheen. The flowers are perfect, exquisite buds opening into large, magnificent blooms, very fragrant. The plant makes a strong, rather spreading bush. Hardy, healthy, producing the beautiful flowers from early summer to frost. Lovely in the garden and exceptional for cutting. Each, \$1.75.

BLAZE. (Patent No. 10.) The everblooming Paul's Scarlet. A riot of brilliant scarlet, brightest of any climbing Rose. Blooms in June and again in fall. Each, \$1.50.



Crimson Glory



American Beauty Climber

HARDY CLIMBERS of Unusual Beauty

AMERICAN BEAUTY. A strong grower with large flowers of a very pleasing rose-pink color. Very good for cutting, and blooms are exquisitely colored and usually fragrant. One of the most popular Neosho Hardy Climbing Roses.

Super X: Each, 95c; 4 for \$3.60

SILVER MOON. The creamy white buds are long and pointed, and open into semi-double, white flowers with golden yellow stamens. An excellent regular monthly bloomer.

Super X: Each, 95c; 4 for \$3.60

DR. W. VAN FLEET. Has long, pointed buds of rich flesh-pink. It is a hardy climber and a splendid variety for cutting. Blooms early and late, and thrives everywhere.

Super X: Each, 95c; 4 for \$3.60

PAUL'S SCARLET. The most brilliant scarlet. Has semi-double flowers, freely produced. This variety is illustrated in natural climbing habit.

Super X: Each, 95c; 4 for \$3.60

COUNTESS VANDAL. (Patent No. 38.) Long, pointed orange-copper buds gracefully borne on long stems, developing into large, double, high-centered blooms of brilliant pink lightened with salmon. Richly fragrant. Each, \$1.50.

BETTER TIMES

(Plant Patent No. 23)

Prized for length of stem, pointed buds, and all-around attractiveness as cut flowers, Better Times are the Roses you'll probably get when you buy long-stemmed red Roses from the florist this winter. This glorious cerise-red Rose, so universally used by commercial cut-flower growers, has brought happiness to millions of people everywhere. By the same token it will give you distinct joy as a grand cut flower, a hardy grower, a distinct addition to your garden display. Each, \$1.50.

Chicago, Ill.,
May 1, 1944.

I was surely pleased with your stock. I received stock from three other nurseries and yours was by far the very nicest and such nice well-spaced branches and nice moist, plump wood and good roots. I set them very carefully and had a nice rain to start them off.

I shall let you know again how they grow and shall be glad to trust you folks for any future stock I need. Thanking you again.

ALMA LUECHT.

Williamsport 14, Penna.
April 21, 1944.

The order was received on the 20th and the weather was ideal, so I was able to plant them at once. We are well pleased with the trees and vines and hope for the best. We will let you know when they are growing and bearing so that you may know how they are doing.

PAGE H. KAUFFMAN

Neosho EVERBL

BLOOM THIS YEAR

Roses are justly called "Queen of the Garden" as nothing else can surpass their fragrance, beauty or produce more abundantly throughout the season.

SUPER X ROSES

\$1.10 each 4 for \$3.95 9 for \$7.95

Customers who desire extra large, heavy plants will find Neosho SUPER X Roses the finest to be had from any source. Big, husky, healthy plants with countless gorgeous blooms the first season.

SELECT GRADE

95c each 4 for \$3.60 9 for \$7.20

Are strictly first class, hardy, 2-year, field-grown, budded plants that will start blooming a few weeks after planting and continue through the summer.

AMI QUINARD. Petals shining crimson-velvet enriched with blackish sheen. Urn-shaped flowers.

BETTY UPRICHARD. Delicate salmon-pink with copper reverse; Verbena fragrance. A healthy free blooming type which makes it an outstanding showy garden Rose.

COLUMBIA. Large, pointed buds of brilliant rose-pink, long lasting. Vigorous grower, fine long stems.

CONDESA DE SASTAGO. A beautiful two-toned coppery red inside, golden tint outside. Delicately perfumed, robust in growth. It glows with outstanding brilliance in any garden.

EDITOR McFARLAND. Clear, brilliant pink; perfectly formed; long lasting when cut. Strong stems. One of the finest pink Roses ever introduced.

ETOILE DE HOLLANDE. Bright red; large, very fragrant. Perfect buds opening into a glorious red flower of incomparable fragrance. Strong grower, free branching and healthy.

GOLDEN DAWN. Sunflower-yellow turning to lemon-yellow. Well formed; sweetly fragrant. Profuse and continuous bloomer. Low growing.

K. A. VICTORIA. The best white; beautiful in bud and full flower. A free and continuous bloomer.

LUXEMBOURG. Large, well-shaped flower of rich yellow; vigorous, branching and bushy.

MRS. CHAS. BELL. A shell-pink Radiance; free bloomer.

PIERRE S. DUPONT. Deep golden yellow, wonderfully fragrant. Steady bloomer. Glossy green foliage. The best yellow for the midwest.

POINSETTIA. This vigorous Rose, so appropriately named, brings to you the brilliance, the glowing red of the Christmas Poinsettia. Long, pointed buds, strong grower.

PRES. HOOVER. Maroon and orange two-toned; vigorous plants; free bloomer. A rainbow of colors.

RADIANCE. Cameo-pink, large, intensely fragrant. Blooms all season in all climates. One of the most popular Roses due to its extreme hardiness and freedom of bloom.

RED RADIANCE. Clear even red, large; long lasting, hardy. The same qualities as Radiance but a rich cerise-red. No Rose will excel it in growth or quantity of blooms.

ROUGE MALLERIN. Deep rich red with a velvety texture; does not fade or blue. Very fragrant and healthy grower.

SENIOR. Large semi-double vivid scarlet flowers overlaid with velvety crimson. Has delicious old rose scent. Vigorous, upright habit, bright green foliage. Ranks as one of the very finest red Roses of recent introduction.

Editor
McFarland

Condesa de
Sastago

Rouge
Mollerin

BOOMING ROSES

SPECIAL *Collection* **OFFER**

of the Roses pictured on these
two pages.

Editor McFarland	Pres. Hoover
Rouge Mallerin	Senior
Golden Dawn	Columbia
K. A. Victoria	Condesa de Sastago

SUPER X GRADE
All 8 for \$6.95

SELECT GRADE
All 8 for \$6.25

Pres. Hoover →

Golden
Dawn

K. A.
Victoria →



Red Leaf Barberry Hedge

For Boundary, Screen or Barrier HEDGES That Beautify as They Serve

Privet Hedges are formal type which you keep pruned to desired shape and height. To make a good compact hedge, they should be planted 8 to 9 inches apart and pruned back to within 2 inches of the ground when they are set. They should be sheared several times in the early part of the growing season to form a dense, compact hedge.

Why is the 2-3 ft. grade more desirable and of greater value than 12-18 inch, if you are going to cut them back when planting? Because the 12-18 inch grade will have 2 to 3 canes. The 2-3 ft. will have 5 to 9 canes and a much heavier root system, hence will make a compact hedge the first season.

The Shrubs we offer in Green and Red Barberry, Spirea Van Houttei, Spirea Thunbergi and Tartarian Honeysuckle are heavy, well-branched, field-grown plants which will give an immediate effect at planting time, and should not be confused with small, spindling 2-year seedlings from beds such as offered by most nurseries.

CALIFORNIA PRIVET. Semi-evergreen, with thick, dark green foliage. Most beautiful of all the Privets, but north of latitude of Kansas City it is only semi-hardy. A rapid grower, can be sheared to any desired height making a dense, compact green wall. Plant 8-9 in. apart.

	Per 10	Per 25	Per 50	Per 100
12-18 in.	\$1.45	\$2.95	\$5.50	\$ 9.95
18-24 in.	1.75	3.50	6.50	11.95
2-3 ft.	2.00	4.50	8.50	15.95

HARDY RUSSIAN PRIVET (Amur River North). America's leading trimmed hedge plant; hardiest of all, standing 20 degrees below zero. Can be trimmed to any desired height and always makes a dense, attractive hedge. Plant 8-9 in. apart.

	Per 10	Per 25	Per 50	Per 100
12-18 in.	\$1.60	\$3.20	\$5.85	\$10.65
18-24 in.	1.95	4.25	7.95	14.95
2-3 ft.	2.50	5.75	10.75	19.95

EVERGREEN PRIVET (Amur River South). Hardy as far north as Kansas City, Missouri. This Privet has dark green glossy foliage, which here at Neosho will hold its foliage all winter long.

	Per 10	Per 25	Per 50	Per 100
12-18 in.	\$1.60	\$3.20	\$5.85	\$10.65
18-24 in.	1.95	4.25	7.95	14.95
2-3 ft.	2.50	5.75	10.75	19.95

Tartarian Honeysuckle



Spirea Van Houttei
Makes Grand Large Hedges

IBOLIUM PRIVET. A cross between California and Iboia Privet, with dark, glossy foliage of the California with the hardness of the Iboia. Well branched. Plant 8-9 in. apart.

	Per 10	Per 25	Per 50	Per 100
12-18 in.	\$1.60	\$3.20	\$5.85	\$10.65
18-24 in.	1.95	4.25	7.95	14.95
2-3 ft.	2.50	5.75	10.75	19.95

THOMPSON'S PRIVET. Hardy variety noted for its hardy, compact growth, with narrow bluish green foliage. One of the best where low, dense hedge is desired. Prices same as above.

BARBERRY, RED LEAF. The leaves are rich, lustrous, bronzy red. It naturally will make a dense, rounded hedge 3 feet tall, but can be trimmed to any desired height. Plant in full sunlight, to develop its full color. Plant 1 foot apart.

	Per 25	Per 50	Per 100
12-15 in.	\$ 9.50	\$17.50	\$29.95
15-18 in.	11.95	22.25	39.95

BARBERRY, GREEN. A protective as well as ornamental hedge, as the small spines will keep out cats, dogs and chickens. Makes an attractive hedge either trimmed or untrimmed. Perfectly hardy. Red berries, and foliage colors beautifully in fall.

	Per 25	Per 50	Per 100
12--18 in.	\$6.25	\$11.50	\$19.95
18-24 in.	7.50	13.75	24.95
2-3 ft.	9.75	17.25	29.95

HONEYSUCKLE, TARTARIAN. One of the most satisfactory tall growing hedge plants. It is strong, vigorous and hardy, and is one of the first shrubs to leaf out in the spring, and retains its foliage well into the winter. The small, pink blossoms are followed by bright red fruits. Normally grows into a hedge 6 to 12 feet and will thrive in most any soil. Plant 3 feet apart.

	Per 10	Per 25
2-3 ft.	\$3.95	\$ 8.95
3-4 ft.	4.95	11.25

SPIREA THUNBERGI. Makes an attractive hedge 4 to 6 feet tall. Its slender arching branches are completely covered with small white blossoms in early spring, and its narrow, light green foliage changes to shades of orange in the fall. Plant 2 feet apart.

	Per 10	Per 25
18-24 in.	\$3.95	\$ 8.95
2-3 ft.	4.95	11.25

SPIREA VAN HOUTTEI (Bridal Wreath). Makes a beautiful untrimmed hedge and is the most widely planted shrub in the United States.

	Per 10	Per 50	Per 100
12-18 in.	\$ 6.25	\$11.25	\$18.75
18-24 in.	7.25	12.50	21.95
2-3 ft.	8.75	14.95	26.95

NEOSHO VINES

for Charm
and Beauty

BITTERSWEET. Clusters of orange-scarlet berries; when dried make lovely winter bouquets. Plant two to pollinize.
Each 50c; 3 for \$1.35

CLEMATIS, Paniculata. Fragrant white flowers in late summer and early fall.
Each 75c; 3 for \$1.95

CLEMATIS, Large Flowered Varieties.
See opposite page.

EVERGREEN HONEYSUCKLE VINE. (Hall's.) Fragrant white and yellow flowers, and attractive blue-green foliage which remains most of the winter. Grows anywhere.
Each 50c; 3 for \$1.35

SCARLET TRUMPET HONEYSUCKLE. Orange-scarlet trumpet-shaped flowers; hardy, attractive foliage.
Each 50c; 3 for \$1.35

EVERBLOOMING HONEYSUCKLE (Heckrotti). Can be grown as a shrub or vine. Bright rose-red flowers lined with gold. Large, blue-green foliage. Blooms all summer. Perfectly hardy.
Each 75c; 3 for \$1.95

IVY, American. A hardy rapid climber; colors bright crimson in fall.
Each 50c; 3 for \$1.35

Boston. The most popular plant for covering brick, stone or wood. Clings to smoothest surface. Colors beautifully in fall.
Each 75c; 3 for \$1.95

English. Semi-hardy evergreen vine; does best on north or east side.
Each 75c; 3 for \$1.95

SILVER LACE VINE. The Silver Lace Vine often grows 20 feet the first season. Thousands of fleecy white flowers in late summer. Hardy and easy to grow.
Each \$1.00; 3 for \$2.75

WISTERIA. Our plants are grafted and sure to bloom. Beautiful lilac-purple.
Each \$1.25; 3 for \$2.95

See Our Front Cover for Special Types of Wistaria





Summer Glory—Everblooming Honeysuckle
Each 75c; 3 for \$1.95

**ORDER
NOW**



Large-Flowering CLEMATIS

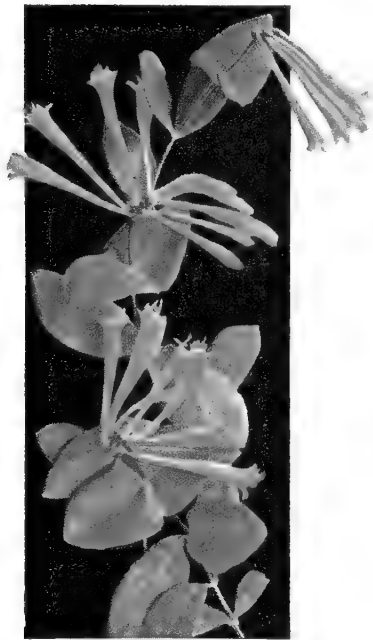
Each \$1.35; 3 for \$3.75.

BARON VEILLARD. Lovely large flowering, free blooming pink.

JACKMANI. The popular purple variety with large purple-blue flowers.

MME. ANDRE. Large purplish crimson flowers.

RAMONA. Beautiful sky-blue flowers.



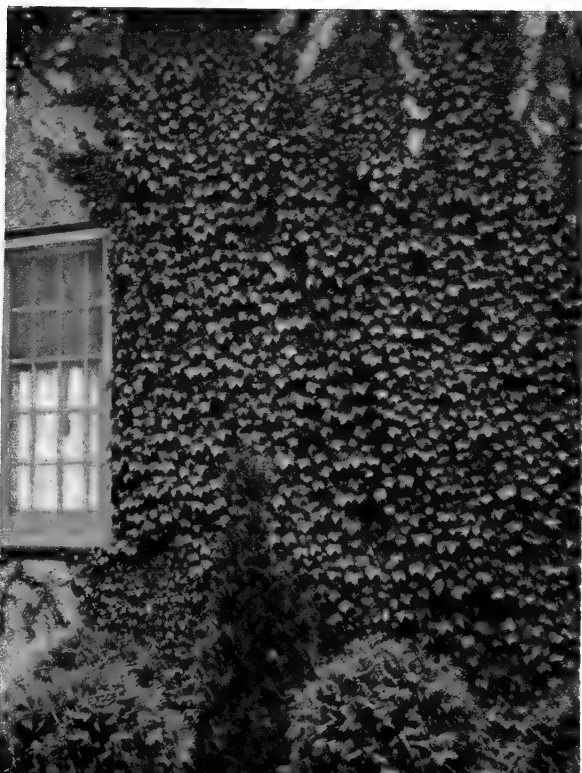
Scarlet Trumpet Honeysuckle
Each 50c; 3 for \$1.35



Bittersweet
Each 50c; 3 for \$1.35



Silver Lace Vine
Each \$1.00; 3 for \$2.75



Boston Ivy
Each, 75c;
3 for \$1.95



Privet Hedge

NEOSHO HARDY

Can Give You Bloom



Scarlet Quince

A few well-placed shrubs bring untold pleasure and beauty to your home. Once planted, they require little care and will bloom year after year. Plant several varieties and have bloom all season.

We offer shrubs in 3 sizes, all hardy, field-grown, first-class plants.

Parcel Post Grade: This grade is the size most Mail Order firms offer as 2-yr., field-grown.

Select Grade are heavier, select plants out of our 2- and 3-year-old blocks; well-rooted and heavier branched.

Super X Grade are for those who desire quick results and extra heavy plants. These are the largest, finest specimen plants obtainable.

ARONIA. Blooms in spring with fragrant white flowers and in the fall the plant is covered with bright red foliage and brilliant red berries. Perfectly hardy and will grow in shaded locations as well as full sun.

Post size 45c Select 60c Super X 75c

ALTHEA. An upright shrub of good, compact habit, particularly suited for screens or specimens in the shrub border. They bloom from July until frost and give color when most other shrubs have finished blooming. Be sure and include some of these to give you color in late summer and fall. We offer red, pink, lavender and white.

Post size 45c Select 60c Super X 75c

ALMOND, FLOWERING. One of the first shrubs to bloom in the spring, it is a profusion of double pink flowers resembling small Roses covering every twig and branch. Perfectly hardy. Grows 3-4 ft. tall.

Select 60c Super X 75c

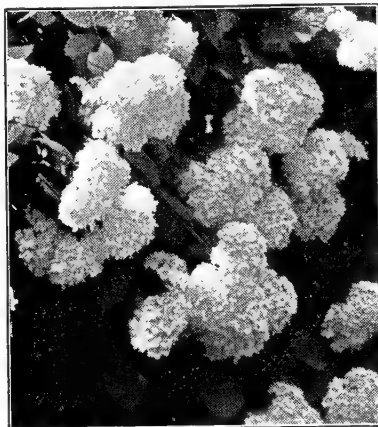
BARBERRY, GREEN. An ideal low shrub for foundation or border planting. Makes a low dense rounded shrub about 3 ft. tall and wide. Will grow in sun or shade and in the fall its foliage colors a beautiful bronzy red. Bright red berries hang on all winter.

Post size 30c Select 40c Super X 50c

BARBERRY, REDLEAF. Most brilliant colored shrub of all with lustrous red foliage all season and bright red berries in the fall. Plant in full sun.

Post size 45c Select 60c Super X 75c

Virginal Mock Orange



Hydrangea, Mills of Snow
(See page 25)

BEAUTYBUSH. One of the best flowering shrubs with graceful branches covered with delicate pink flowers in great profusion. Closely related to Weigelas but possesses a greater degree of beauty and refinement.

Select 75c Super X 90c

BEAUTYBERRY. Graceful branches covered in August with thousands of closely set small pink flowers. These are followed in September by masses of glittering violet-blue berries in dense clusters along each branch.

Post size 45c Select 60c Super X 75c

BUTTON BUSH. An excellent shrub for the border with attractive foliage and feathery white round ball-shaped flowers resembling round buttons. June to September. Grows 6-8 ft.

Post size 45c Select 60c Super X 75c

BUSH CHERRY. Fruitful as well as ornamental with white blossoms followed by rich red fruit which is fine for jams, jellies or pies.

Select 2 yr., 2 for \$1.69

Super X, 2 for \$1.98

CRAPEMYRTLE. Lovely clear flowers of soft crepelike texture all summer long. Blooms on new wood each year. Not hardy north of Kansas City.

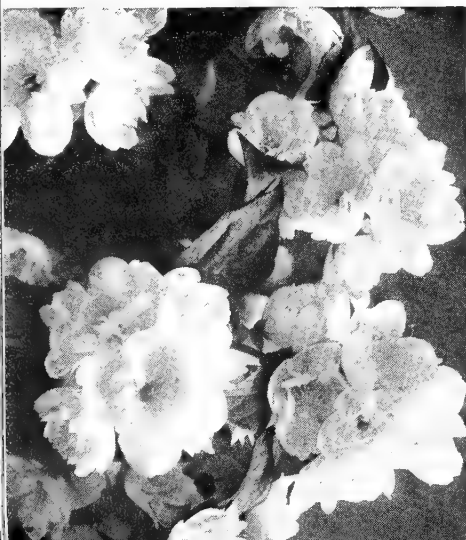
Each \$1.00

CALYCANTHUS (Sweet Shrub). A handsome shrub with glossy foliage and chocolate-brown flowers which have a spicy fragrance. Will grow in shade. Graced grandmother's garden and still popular.

Post size 45c Select 60c Super X 75c

Easy Payment Plan

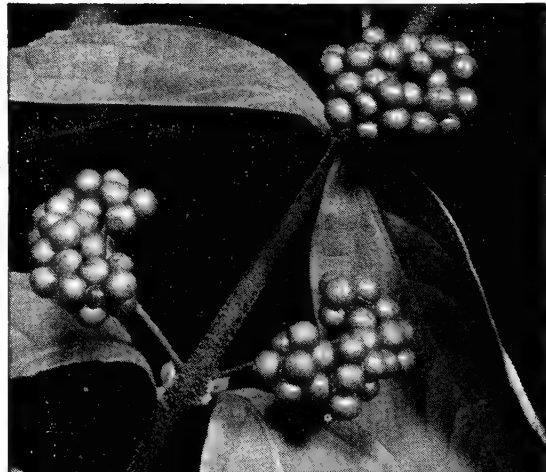
There is NO RED TAPE to our Easy Time Payment Plan. Simply write for our Time Payment Blank which gives full details. Fill out blank and return to us with your order and deposit, you will receive shipment at the PROPER PLANTING TIME. You pay in TEN EQUAL MONTHLY PAYMENTS. Time Payment Plan limited to orders of \$25.00 or more.



[22] Zabelli Honeysuckle



Beautyberry



FLOWERING SHRUBS

from Spring Until Frost

DESMODIUM. A medium growing shrub with long graceful branches covered with large clusters of royal purple Sweet-Pea-like flowers in early fall—very showy. Especially desirable because little else is in bloom at this time.

Select 60c Super X 75c

DEUTZIA, PRIDE OF ROCHESTER. A vigorous grower with double white flowers, tinged with pink in great profusion in April and May. Grows 8-10 ft. tall.

Post size 45c Select 60c Super X 75c

JETBEAD. A low, somewhat arching bush with pretty foliage and attractive white flowers in May followed by shiny black berries. 4 ft.

Post size 45c Select 60c Super X 75c

HONEYSUCKLE, FRAGRANT. Fragrant creamy white flowers nestled in deep green leaves adorn the nearly evergreen shrub. The glossy dark green leaves remain until almost spring. Grows 8 ft tall.

Post size 45c Select 60c Super X 75c

HONEYSUCKLE, TARTARIAN. A rapid grower with handsome foliage and rosy pink flowers followed by bright red berries. Fine for the border. 8-10 ft.

Post size 40c Select 50c Super X 60c

HIGH BUSH CRANBERRY. Handsome shrub of upright spreading form with dense brilliant green foliage. Single white flowers in April-May are followed by clusters of scarlet berries in late summer, hanging on until spring. Will grow in shade as well as sun. 8-10 ft.

Post size 60c Select 75c Super X 90c

LILAC, CHINESE. The most graceful of the Lilacs with slender branches and lovely rosy lilac flowers in May. Will bloom the next year after planting.

Post size 45c Select 60c Super X 75c

LILAC, COMMON. No other shrub has quite the place in the hearts of people as the old-fashioned lilac. Grows anywhere and its masses of light purple bloom in early spring are a constant delight.

Select 60c Super X 75c

MOCK ORANGE, OLD-FASHIONED. An old favorite with single white flowers of sweet-scented fragrance. A vigorous, upright hardy shrub that grows 8-10 ft. tall.

Post size 40c Select 50c Super X 60c

MOCK ORANGE, VIRGINAL. The double flowering variety that has become so popular. Large, double white flowers in profusion, exquisitely fragrant. Grows 6-8 ft. tall.

Post size 45c Select 60c Super X 75c

Fern-Leaved Privet



HONEYSUCKLE, ZABELLI. A new variety with rosy red flowers followed by bright red berries. One of the hardiest shrubs with good compact bushy habit of growth. 6-8 ft.

Post size 45c Select 60c Super X 75c

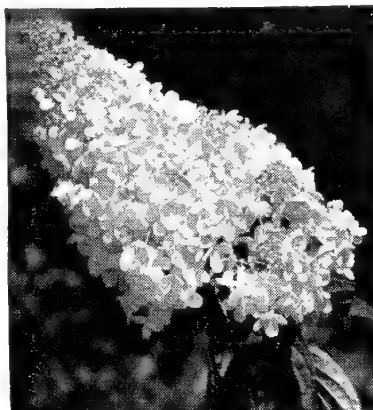
MOCK ORANGE, WHITE BOUQUET.

The most profuse bloomer. The twiggy branching plant is completely covered with pure white flowers in spring. 5-6 ft.

Post size 45c Select 60c Super X 75c

MOCK ORANGE, LEMOINE. Fine, graceful branching habit with starry white single flowers.

Post size 40c Select 50c Super X 60c



Hydrangea P. G.
(See page 25)

PEARL BUSH. A magnificent shrub for your border with attractive foliage all season and in May its branches are covered with hundreds of pearl-like buds, each one of which opens into a gorgeous pure white bloom of large size. A hardy neat erect shrub 6-8 ft. tall.

Post size 45c Select 60c Super X 75c

PRIVET, FERN LEAF (Regel's). Low growing, dense shrub with horizontal branches; one of the best for shade.

Post size 40c Select 50c Super X 60c

[23] Calycanthus (Sweet Shrub)



Highbush Cranberry

Midland, Texas,
February 14, 1944.

Gentlemen:

We have purchased trees and shrubs from several nurseries this year and we think merchandise ordered from your Company the best we have on our ten-acre home place.

Thank you for the promptness in handling our order which came through in good shape.

We will report to you late this summer as to how each plant grew. We also appreciate the shrub which you sent complimentary.

Yours truly,
MRS. GEORGE S. PARK.

Cincinnati 15, Ohio,
July 2, 1945.

I hesitated this spring to send you my first order due to the distance from here and the wartime shipping conditions. Finally I compromised and sent part to you and balance to another closer nursery.

Your stock was twice as long en route, yet was in better shape than any other received either this year or any previous time from all other nurseries. Also your Super X shrubs were much healthier and of generous size. I await your next catalog.

Yours,
WALTER E. BACHMAN.

Deutzia, Pride of Rochester





Magnolia Glauca (Sweet Bay)

OUTSTANDING

Rare Beauty and

MAGNOLIAS

MAGNOLIA GLAUCA (Sweet Bay). A beautiful hardy flowering Magnolia. Grows 15-20 ft. high; has bluish glossy leaves, nearly white underneath. Semi-evergreen. Deliciously fragrant white cup-shaped flowers 3-4 in. in diameter in May-June. Red fruit pods follow the bloom and are most attractive.

3-4 ft., B&B, \$5.00 4-5 ft., B&B, \$6.50
5-6 ft., B&B, \$8.50

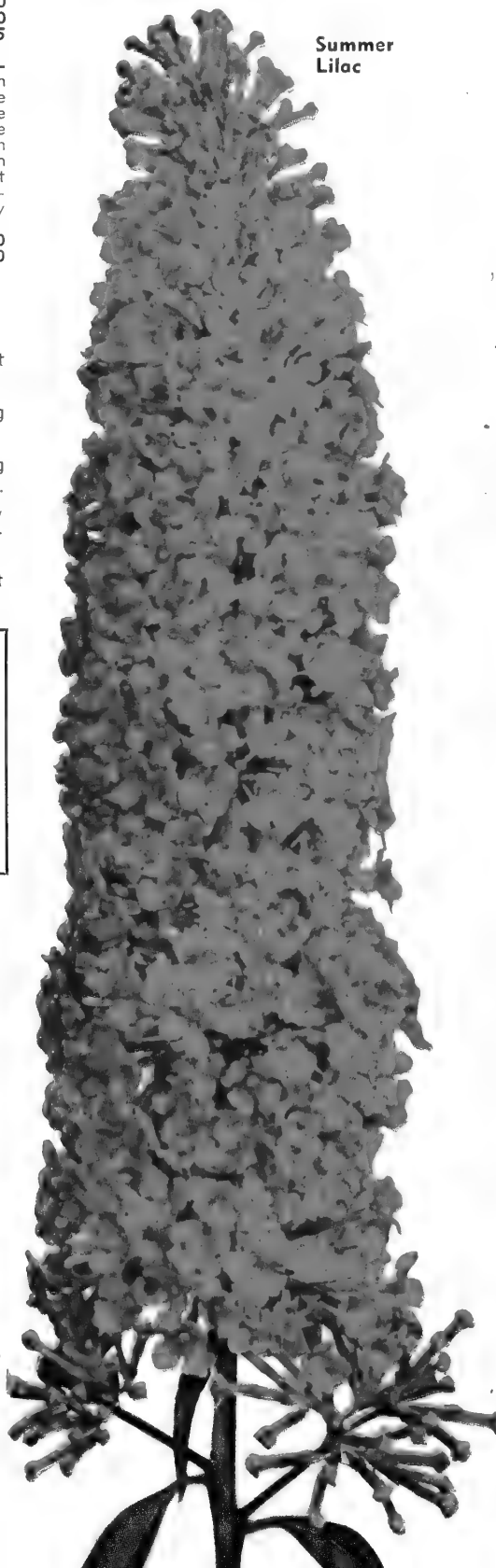
MAGNOLIA SOULANGEANA NIGRA. A deciduous type with large Tulip-shaped blossoms of wine-red early in spring before leaves appear.

2-3 ft., B&B, \$5.00
3-4 ft., B&B, 7.50
4-5 ft., B&B, 9.95

MAGNOLIA GRANDIFLORA (Southern Magnolia). The Magnolia of the Southland. Large leathery evergreen leaves — mammoth white fragrant blossoms in June-July. Not hardy north of Neosho.

3-4 ft., B&B, \$6.50
4-5 ft., B&B, 8.50

Summer Lilac



SUMMER LILAC *Butterfly Bush*

Blooms from June till frost. New varieties with gorgeous colors, immense fragrant flowers. Hardy roots, tops die down in winter.

CHARMING. Rosy orchid-pink flower spikes 15-18 in. long, full and tapering towards the tip. Bright green foliage; a beautiful variety. **Each, 75c.**

FLAMING VIOLET. The finest and most brilliant of all. Immense spikes of flaming violet, intensely brilliant and sparkling, with a fiery glow rarely seen in flowers. Flower trusses are 12-18 inches long and last a long time in bloom on the shrubs, as well as when cut and placed in water. Plant is vigorous, strong and upright. Flowers throughout the summer and autumn. **Each, \$1.00.**

ILE DE FRANCE. A well-shaped plant 4 ft. tall with rich purple flowers with bright orange eye; rich green foliage. **Each, 75c.**



Oakland, Mo.,
March 20, 1944.

The trees arrived in good shape. I am well pleased with them. We have been planting fruit trees for years and I believe your trees are equal, if not superior, to any we have ordered in recent years. Many thanks for the Tatarian Honey-suckle—I have a bare corner in my yard needing just such a shrub.

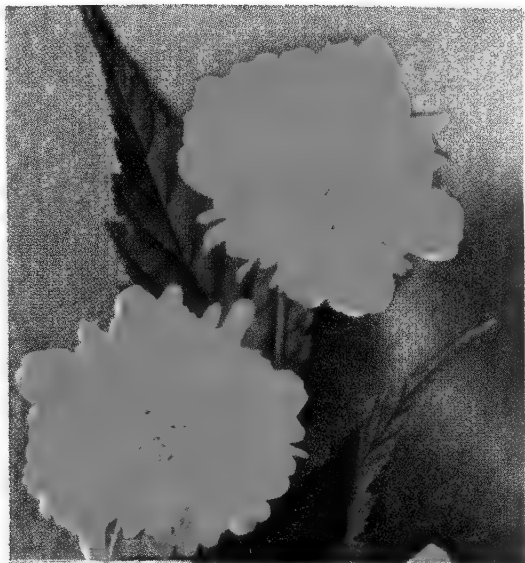
JESSIE F. SAVAGE.

← WEIGELA, BRISTOL RUBY

A new Weigela which is the best in every respect. It makes a well-rounded specimen 6-8 feet tall with ruby-red flowers and attractive green foliage. Hardy and vigorous. Super X, \$1.00.

VARIETIES

Distinction for Your Grounds



PINK HYDRANGEA

This beautiful new, hardy variety produces large, irregular globe-shaped clusters of semi-double flowers 12-15 in. in diameter, of a beautiful clear pink on alkaline soil, but in acid soil it is a magnificent light blue. Healthy, decorative foliage. Grows 2-3 ft. wide and about the same height. A **must** for any yard. **2-yr. plants, each \$2.50.**

WHITE HYDRANGEA

HYDRANGEA P. G. Immense cone-shaped white flower heads which change to pinkish bronze later. **Each \$0.75**
Parcel Post size \$0.75
Select grade 1.00

LACEFLOWER

(*Hydrangea Acuminata*)

A new outstanding low growing Hydrangea with beautiful lacy flat blooms, blue clusters in center surrounded by large white single blossoms that will add charm to your garden. **Strong, No. 1 plants, each \$2.50.**

Laceflower—Hydrangea Acuminata

GLOBE FLOWER

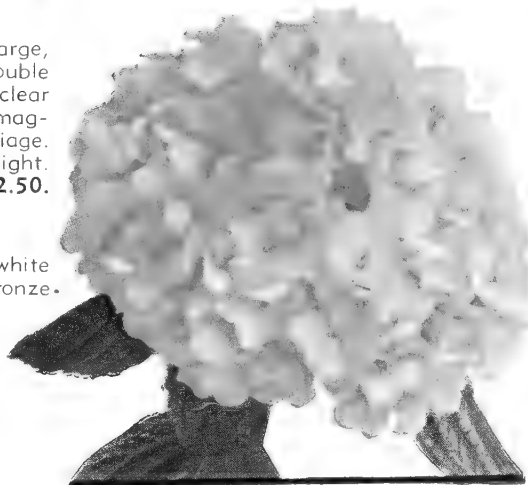
Brilliant double golden yellow flowers in May-June and intermittently all summer. Bright green stems and foliage add to the brilliancy of the flowers. Plant it in the sun and its pure golden flowers will delight you the entire summer.

Post size \$0.75
Select grade 1.00

HYDRANGEA "Hills of Snow"

Grows 4 to 6 feet. Stands shade; large heads of pure white flowers like snowballs in July-August.

Parcel Post size \$0.75
Select grade 1.00



Pink Hydrangea



BLUE MIST

(*Caryopteris*)

Another charming, low growing shrub and a real contribution to the meager list of summer and fall flowering shrubs. From August until frost it is covered with powdery blue-fringed flowers. Shrub grows 2-3 ft. wide and about as tall, with silvery green foliage. Perfectly hardy. **Each, \$1.00.**

RED SNOWBERRY

Here's one of the hardiest low growing shrubs with beautiful foliage all summer, and masses of pink berries in the fall. Will grow anywhere. Its graceful foliage and habit of growth make it ideal for hard-to-grow places in foundation planting or border. **2-yr., each 75c.**

Red Snowberry



SCARLET QUINCE. Brilliant scarlet blossoms in early spring followed by fragrant yellow Quinces which make delicious jelly.

Post size 45c Select 60c
Super X 75c

SNOWBALL. An old-fashioned tall growing shrub still popular. In the spring it is completely covered with pure white Snowball-like blossoms. Perfectly hardy.

Post size 50c Select 75c
Super X 90c

VIBURNUM, ENCHANTMENT. See Evergreen page.

WEIGELA, BRISTOL RUBY. See page 24.

TAMARISK. A tall growing shrub with feathery green foliage and bright pink flowers in May. Can be kept pruned to any desired height.

Select 60c Super X 75c

WEIGELA, EVA RATHKE. Spreading habit of growth and dark red trumpet-shaped blooms in April-May.

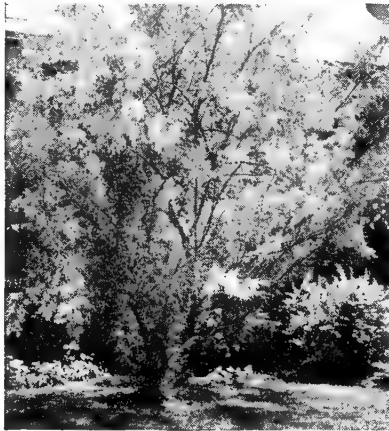
Post size 45c Select 60c
Super X 75c

WEIGELA ROSEA. A broad shrub 6-8 ft. tall with rose-pink trumpet-shaped flowers in April-May.

Post size 45c Select 60c
Super X 75c



Scarlet Quince



Tamarisk



Snowball



Korean Spirea



Crimson Spirea



Weigela

THE SPIREAS

CRIMSON. Our most popular low growing shrub, making a neat, dense bush 2-3 ft. tall with lovely rose-red flowers all summer. Ideal for foundation, corners or foreground of the border.

Post size 40c Select 50c
Super X 60c

FROEBELI. A low compact shrub to 4 feet covered in May and June with clusters of bright pink flowers. Foliage maroon and green; perfectly hardy.

Post size 40c Select 50c
Super X 60c

KOREAN. Similar to Bridal Wreath, blooms 2 weeks later. Grows 6 to 8 feet.

Post size 40c Select 50c
Super X 60c

PRUNIFOLIA. 6 to 8 ft. Blossoms early with small double white blooms. Dark green foliage turning orange in fall.

Post size 45c Select 60c
Super X 75c

VAN HOUTTEI. This popular shrub needs no description. Most people know it as "Bridal Wreath."

Post size 30c Select 40c
Super X 50c

THUNBERGI. Graceful habit, white flowers in March-April. Grows 5 to 6 feet.

Post size 40c Select 50c
Super X 60c

Vinita, Okla.,
Oct. 30, 1943.

I received my hedge today and I think it the best I have ever seen. It is so well rooted and uniform size, am very much pleased with it and I will tell my friends about "Neosho Nurseries" for that's the nursery for me from now on. Many thanks for the two shrubs you sent me, free. Will appreciate you sending my other order just as soon as possible. Thanking you again.

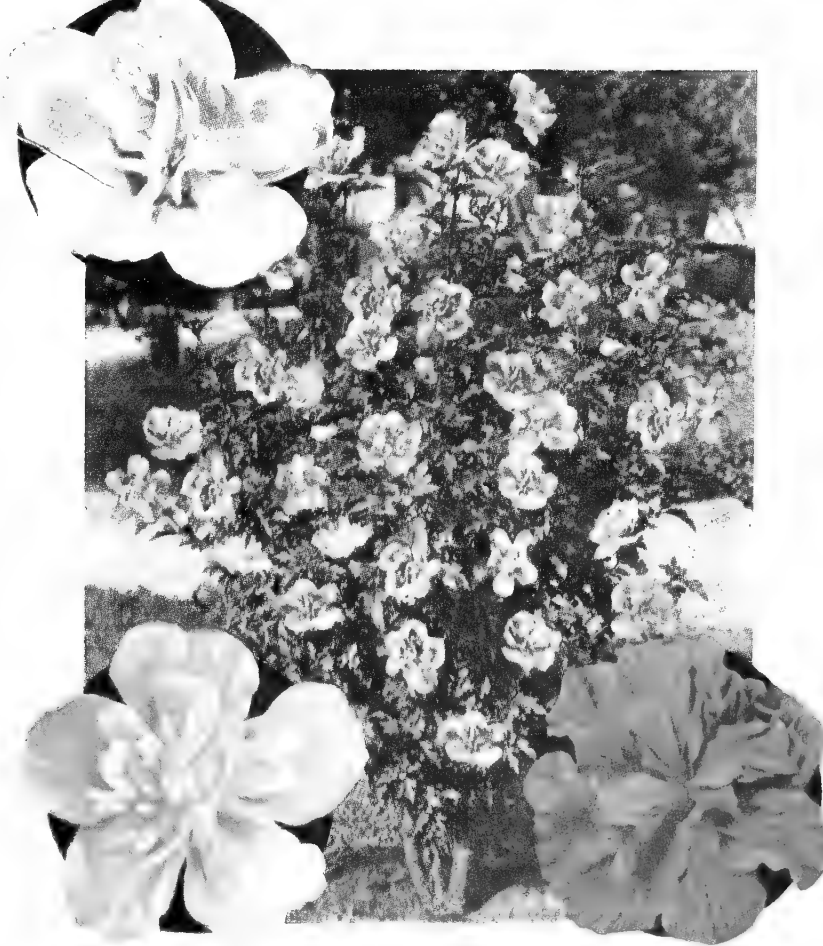
"A Satisfied Customer",
P. R. JACKSON.



FORSYTHIA SPECTABILIS
(Golden Bell)

A riot of bright yellow bell-shaped flowers in early spring. This variety is the best bloomer of all the Forsythia with thousands of blooms on medium-sized plants. Will grow most anywhere, growing 6-8 ft. tall and nearly as wide.

Each	
Post size	\$0.45
Select60
Super X75



SHRUB ALTHEA - Rose of Sharon

An upright shrub of good, compact habit, particularly suited for screens or specimens in the shrub border. They bloom from July until frost and give color when most other shrubs have finished blooming. Be sure and include some of these to give you color in late summer and fall. We offer red, pink, lavender and white. All double flowers.

Each	
Post size	\$0.45
Select60
Super X75

Glorious

HYBRID LILACS

*Colorful
Fragrant
Hardy*

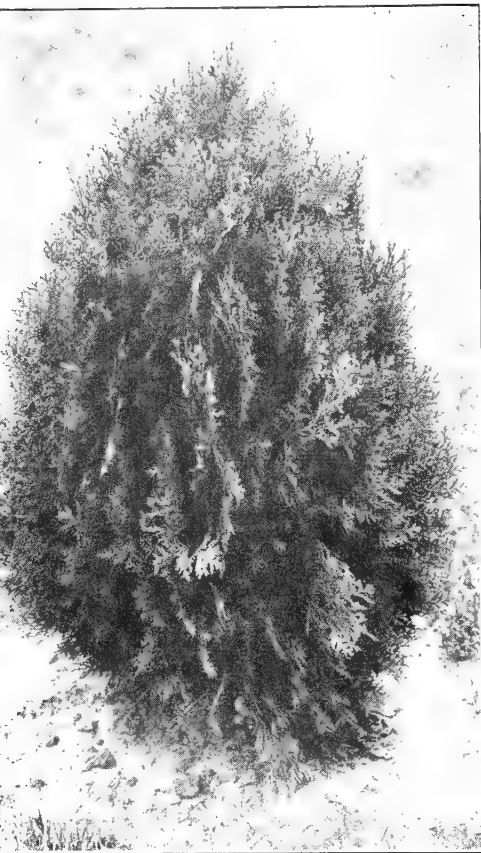
These Lilacs bloom very young, usually the next spring after planting. Ultimate height of 6-8 feet. Be sure and plant some of these and enjoy their color and fragrance every spring. Last a lifetime. One of the finest of all shrubs.

We offer them in either Blue, White, Pink or Wine.

Each	
Post size	\$0.95
Select	1.35
Super X	1.75

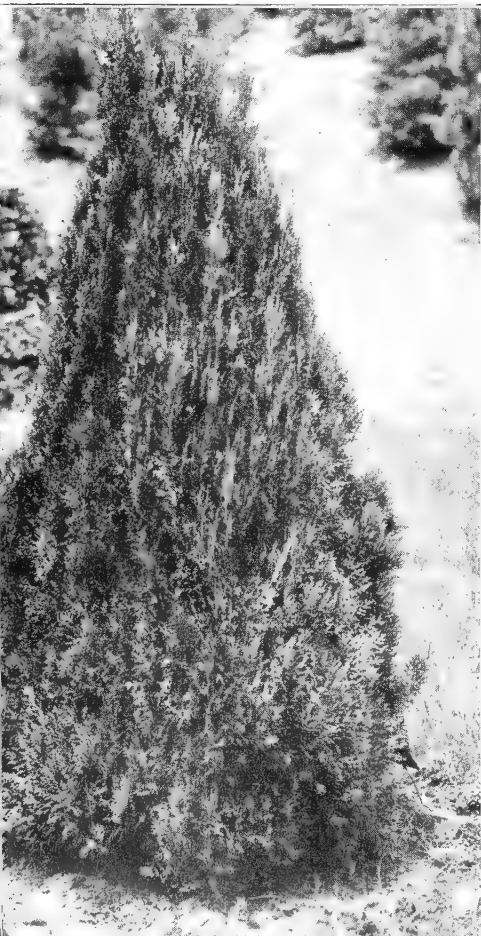
Neasha

EVERGREENS



Berckmann's Golden Arbor-Vitae

Baker's Pyramidal Arbor-Vitae



ARBOR-VITAE

Formal pressed leaf types of pyramidal, conical and globe shapes. The American type is hardy in the North while the Chinese types withstand heat and drought, and are better adapted to southern locations.

AMERICAN PYRAMIDAL. Dark green, pyramidal habit.

2-3 ft., \$2.95 3-4 ft., \$3.95

GOLD SPIRE. (Chinese.) Broad pyramidal shape, bright green foliage with golden yellow tips.

3-4 ft., \$3.95 4-5 ft., \$4.95

BERCKMANN'S GOLDEN. (Chinese.) Conical, compact with bright green foliage, gold tipped.

15-18 in., \$2.50 18-24 in., \$3.50
24-30 in., \$4.50

BAKER'S PYRAMIDAL. (Chinese.) Pyramidal type with bright green foliage.

2-3 ft., \$2.95 3-4 ft., \$3.95

JUNIPERS

Pyramidal Types

These are the hardiest of all ornamental Evergreens. Readily adapt themselves to all sorts of climatic conditions. Can be pruned formal if desired.

ASHFORDI. A slender pyramidal type with gray-green foliage.

2-3 ft., \$2.50 3-4 ft., \$3.50
4-5 ft., \$4.50

CANNARTI. One of the best pyramidal sorts with deep green foliage and attractive bright blue berries.

3-4 ft., \$4.95 4-5 ft., \$5.95
5-6 ft., \$7.95

CHINESE. A bright blue-green, prickly foliage. Retains its color throughout the winter. Plant maintains straight central leader without pruning.

3-4 ft., \$4.95 4-5 ft., \$5.95
5-6 ft., \$7.95

DUNDEE. A slender type with green foliage which colors a beautiful live bronze-purple in winter. Plant maintains straight central leader without pruning.

3-4 ft., \$4.95 4-5 ft., \$5.95

IRISH. Slender pyramidal with blue-green foliage all the year round. Maintains straight central leader without pruning.

2-3 ft., \$2.95 3-4 ft., \$3.95
4-5 ft., \$4.95

VIRGINIANA GLAUCA. The best Silver Juniper, requires pruning to keep it slender.

3-4 ft., \$4.95 4-5 ft., \$5.95

Intermediate Types

ELEGANTISSIMA. A broad informal type, green foliage with golden yellow tips.

2-3 ft., \$3.00 4-5 ft., \$5.00
3-4 ft., 4.00 5-6 ft., 7.00

MEYERI. A dwarf irregular type with bright steel-blue foliage.

18-24 in., \$3.75
24-30 in., 4.95

SPINY GREEK. Cone-shaped, compact, with silvery blue green foliage.

15-18 in., \$2.25 18-24 in., \$3.00
24-30 in., \$3.95

Spreading Types

ANDORRA. Very low spreader with bluish green foliage which colors a live purplish cast in winter.

18-24 in., \$2.50 24-30 in., \$3.25
30-36 in., \$4.25

GOLD-TIPPED PFITZERI. Spreading habit with green foliage tipped with bright gold.

18-24 in., \$2.50 24-30 in., \$3.25

PFITZERI. The best all round evergreen grown. Exceptionally hardy—spreading habit and good green foliage.

15-18 in., \$2.00 30-36 in., \$4.00
18-24 in., 2.50 36-42 in., 6.00
24-30 in., 3.00 42-48 in., 7.00

SAVIN. Vase shaped with deep green foliage.

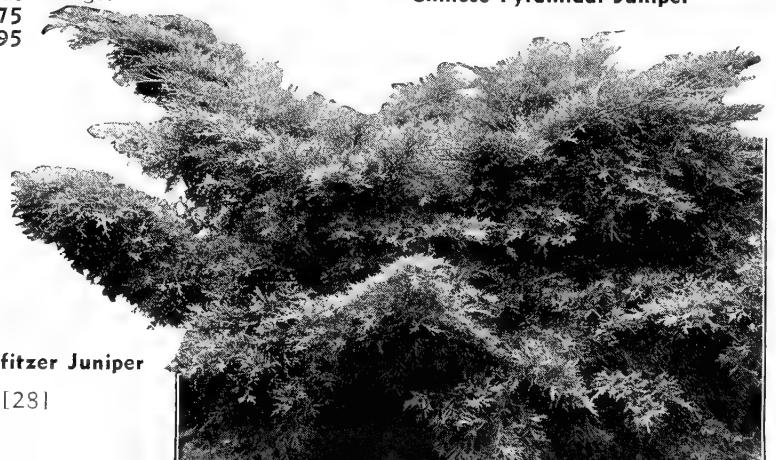
18-24 in., \$2.50 24-30 in., \$3.00

PROCUMBENS. Very dwarf spreading type with prickly blue-green foliage.

15-18 in., \$2.25 18-24 in., \$2.75



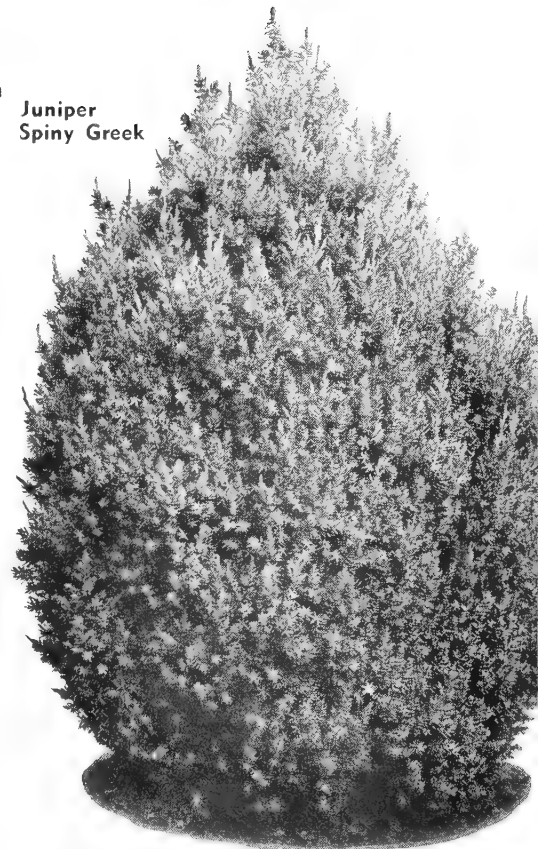
Chinese Pyramidal Juniper



Pfitzer Juniper

Year 'Round Beauties

Juniper
Spiny Greek



SPECIAL NOTATION

Prices on Evergreens here listed are balled and burlapped ready to be moved by car or truck. Drive in and make your selection from our most complete assortment. Where freight or express shipment is necessary, we are required to box the evergreens for shipment and a boxing charge is made amounting to 25% of purchase price which should accompany your order.

PINES

These are fine for specimens on the lawn, for screen plantings and windbreaks.

AUSTRIAN. Long dark green needles.

Prices same as Scotch Pine.

SCOTCH. Broad, green cone.

3-4 ft., \$4.00 5-6 ft., \$ 8.00

4-5 ft., 6.00 6-8 ft., 12.00

MUGHO. (Dwarf.) A compact globe type suitable for foundation or corners.

15-18 in., \$2.95 18-24 in., \$3.95

24-30 in., \$4.95

SPRUCE

Make beautiful specimens for the lawn.

NORWAY. The best Spruce for mid-west conditions. Good dark green color.

2-3 ft., \$3.50 3-4 ft., \$4.95

4-5 ft., \$7.00



Norway Spruce

BROADLEAF EVERGREENS - *Balled and Burlapped*

ABELIA GRANDIFLORA. 4-5 ft. A hardy free blooming shrub with shiny purplish green leaves. Blooms profusely all summer with small light pink, trumpet-shaped blossoms. Graceful, upright spreading grower.

18-24 in., \$1.95 2-3 ft., \$2.95

BOXWOOD. (Korean.) 2 ft. The best type of Boxwood for the mid-west—low, compact, dwarf grower with small deep green foliage. Can be sheared as desired.

15-18 in., \$3.00

COTONEASTER PRAECOX. 2-3 ft. A low growing evergreen shrub with almost horizontal branches covered with dark green glossy foliage. Bright red berries hang on all winter. Excellent for rock garden, wall or facer planting.

18-24 in., \$2.50 2-3 ft., \$3.00

Abelia Grandiflora

EUONYMUS PATENS. 4-5 ft. One of the finest evergreen shrubs, with bright green, glossy foliage. Compact and shapely habit. In the fall numerous orange bittersweet berries add to its charm. Will grow in shade or sun and can be pruned any way desired.

15-18 in., \$1.50 2-3 ft., \$2.25

18-24 in., 1.85 3-4 ft., 3.25

FIRETHORN (Pyracantha Coccinea). 3-4 ft. A compact spring plant covered with small dark green foliage and brilliant red berries in winter.

2-3 ft., \$2.95

MAHONIA. 3-4 ft. A hardy broadleaf Evergreen with shiny green, Holly-like leaves which turn a bronzy red in fall and winter. In spring the clusters of

yellow flowers are very attractive, these are followed by blue berries in June-July. Will grow in shaded locations.

15-18 in., \$2.25 18-24 in., \$3.00
2-3 ft., \$3.75

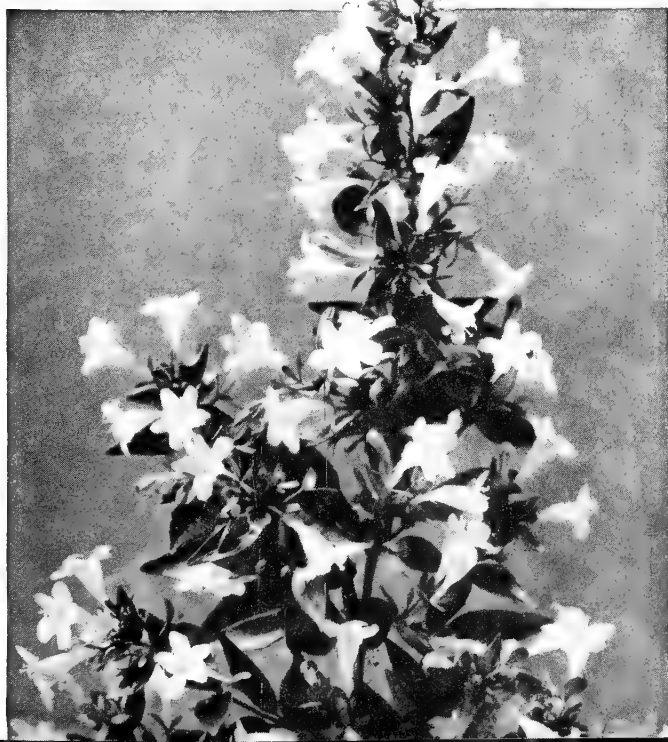
NANDINA. 4-5 ft. An erect growing shrub with Bamboo-like shoots. Foliage finely cut, brilliantly colored, varying from dark green to bright red. Clusters of brilliant red berries in fall.

18-24 in., \$2.00 2-2½ ft., \$2.65
2½-3 ft., \$3.50

VIBURNUM, ENCHANTMENT. 5-6 ft. Neat compact habit of growth bearing 5-inch clusters of white flowers in May followed by clusters of rich scarlet berries. Foliage colors bronzy red in fall and remains on until late winter.

Select, \$1.95 Specimen, \$2.95

Mahonia



Rainbow Collection of GLADIOLUS

See Color Illustration on Back Cover Page



DAHLIAS

Each 70c

3 for \$1.85

6 for \$3.25

GALLANT FOX. Vivid red with sturdy stems and excellent keeping qualities.

JERSEY'S BEAUTY. The most popular Dahlia; lavender-pink. Fine stem and foliage.

AVALON. Large flowers of clear yellow on long stems.

PRIDE OF STRATFORD. Bright orange shade with long, stout stems and good foliage.

MRS. GEO. LE BOUTILLIER. A rich velvety carmine, giant in size and outstanding in all respects.

MARGARET WOODROW WILSON. Faces of petals creamy white with reverse pink.

MRS. IDA DE VER WARNER. Large flowers of deep mauve-pink; can be grown to a diameter of 11 inches.

JANE COWL. A large flower of warm buff and old gold blending to a bright salmon at center.

DAHLIA COLLECTION

(Mixture of Decorative Types)

Here are 6 bulbs of assorted colors of Decorative types most suitable for cut flower bouquets. Free bloomers and easy to grow. Bloom first year.

6 for \$2.50



Regal Lily

CANNAS

Stately flowers of brilliant colors; easy to grow. Bloom first year.

PRESIDENT. Immense flowers of rich scarlet; green foliage. 4 ft.

KING HUMBERT. Orange-scarlet; bronze foliage. 4½ ft.

YELLOW HUMBERT. Yellow flowers with red spots; green foliage. 4½ ft.

CITY OF PORTLAND. Coral-pink; green foliage. 4 ft.

3 for 60c 6 for 98c 12 for \$1.75

CALADIUM

(Elephant Ear)

Decorative foliage plant. Immense green leaves, 2 to 3 feet, on long stems up to 4 feet.

Each 35c 3 for 95c

LILIES

May be planted fall or spring. Fall planting will bring earlier and better bloom the first season.

REGALE. America's most popular hardy white Lily. Frequently will have 20 to 25 blooms in a cluster. Easy to grow.

Each 70c 3 for \$1.95

EMERALD LILY. Large clusters of lovely white flowers with pale emerald-green throat from August until frost. Hardy and easy to grow.

Each 70c 3 for \$1.95

FIRE or CORAL LILY. Small, brilliant scarlet flowers on stems 18 to 24 inches tall in June.

Each 35c 3 for \$1.00

Daylilies (HEMEROCALLIS)

EASY TO GROW

LONG BLOOMING

FRAGRANT—HARDY

GEO. YELD. Magnificent, one of the very best. Large open flowers 6 inches across with wide petals of canary-yellow brushed red, deeper towards the throat with clear yellow star at throat. Unique and striking.

Each 75c 3 for \$2.00

MOONSTONE. Reddish buff, deeper towards throat. Each petal has a narrow pure yellow stripe down center to the tip. Outside of petal clear yellow.

Each \$1.00 3 for \$2.75

DARK EYES. Mahogany-red with orange markings. Profuse bloomer with flowers 4 inches across in May and June.

Each \$1.25
3 for 3.25

Daylily Collection

Made up of good varieties to give bloom from May until September, including one each of:

Middendorf. Rich orange-yellow.

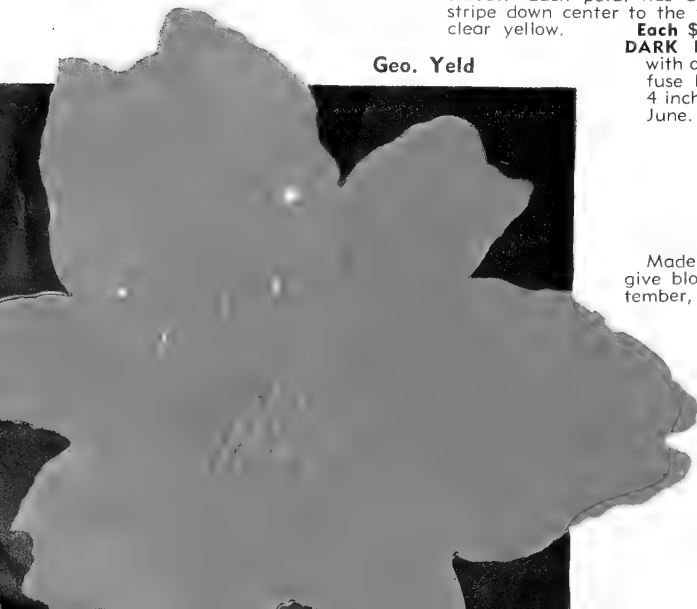
Minor. Pure yellow.

Citrona. Latest to bloom. Lemon.

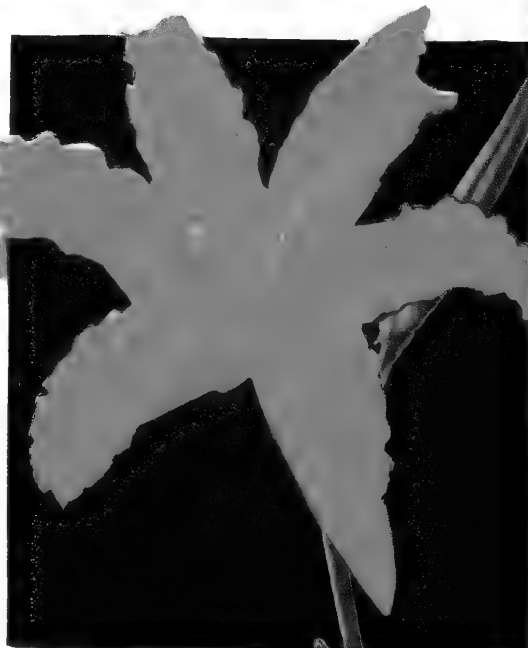
Geo. Yeld. Described above.

Florham. Soft yellow, sweet scented.

5 for
\$2.00



Geo. Yeld



Moonstone



Double Hollyhocks

Cushion Chrysanthemums

Dwarf, Pink-Cushion Type which bloom from August till frost. A bushel of bloom at a time, as many as a thousand flowers on a single plant. Very hardy, easy to grow. Blooms first year. Four different, striking, vivid colors—Yellow, Bronze, Pink, and Red.

Each 50c 3 for \$1.35

NEOSHO LONG-SPURRED COLUMBINE

Among the first perennials to bloom in the spring; this lovely strain with rich colors, large flowers, is sure to please. Perfectly hardy.

Each \$0.35 6 for \$1.65
3 for .90 12 for 3.00

Columbines



DOUBLE HOLLYHOCKS

A magnificent new strain with exquisite double flowers; hardy and easy to grow.

Each \$0.35 6 for \$1.65
3 for .90 12 for 3.00

SWEET WILLIAM. Old-fashioned flower of ever-increasing favor. No garden is complete without some of the beautiful, prolific bloomers; will add much color and charm to your garden. Mixed colors.

Each \$0.35 6 for \$1.65
3 for .90 12 for 3.00

FRINGED SHASTA DAISY. Immense flowers 2-3 inches across, with narrow frilled petals of white and clear yellow center. Beautiful in the garden and fine for cutting. A profuse bloomer. Thrives in ordinary soil.

Each \$0.35 3 for \$0.90



Blooms of Cushion Chrysanthemum

HARDY PHLOX

One of the best perennials, blooming over a long period. Easy to grow, beautiful colors.

DAILY SKETCH. A magnificent Phlox. Color is a lustrous, sparkling pink with deeper eye. Large trusses of very large flowers on tall strong stems.

Each \$0.45 6 for \$2.35
3 for 1.25 12 for 4.50

SALMON GLOW. Immense heads of rich salmon. Very free blooming.

Each \$0.45 6 for \$2.35
3 for 1.25 12 for 4.50

MARY LOUISE. Without doubt the best white Phlox with immense heads of purest white. Free bloomer.

Each \$0.45 6 for \$2.35
3 for 1.25 12 for 4.50

HARVEST FIRE. A new outstanding variety, the most brilliantly colored of any Phlox. Large flowers of vivid sunset orange-red.

Each \$0.55 6 for \$2.75
3 for 1.50 12 for 5.25

ROYAL PURPLE. Rich shaded violet with deeper eye.

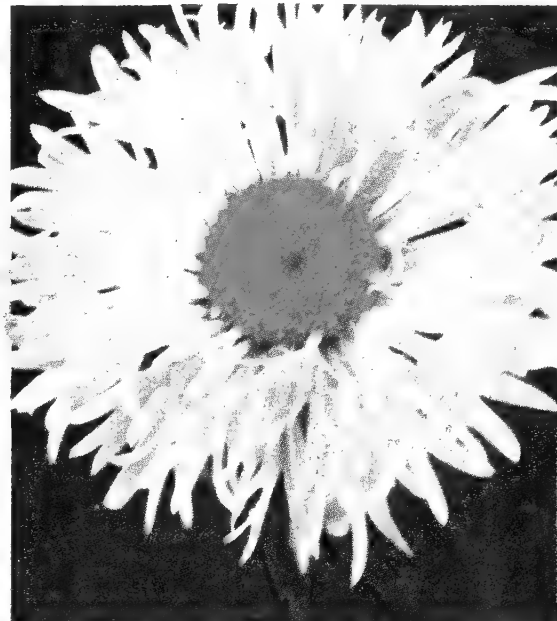
Each \$0.45 6 for \$2.35
3 for 1.25 12 for 4.50

SWEETHEART. Deep salmon-pink. A beauty.

Each \$0.55 6 for \$2.75
3 for 1.50 12 for 5.25

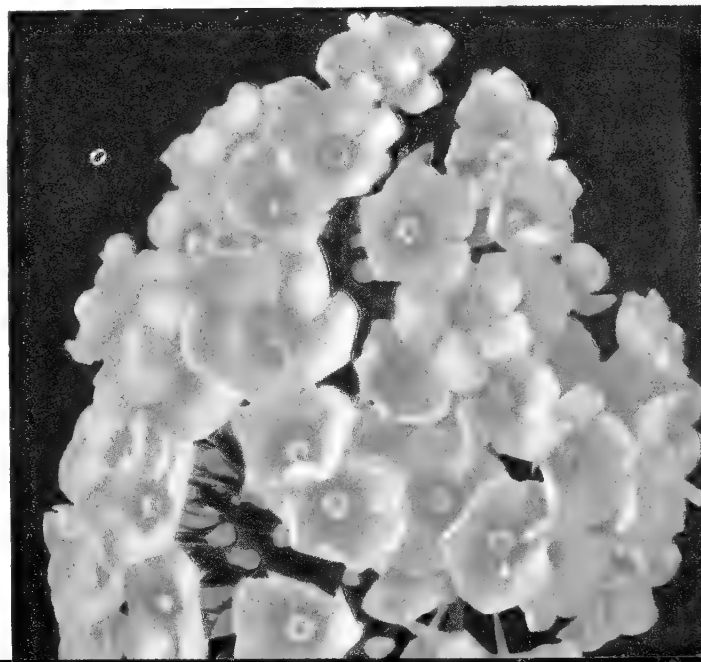


Sweet William



Fringed Shasta Daisy

Phlox, Daily Sketch





Baby's Breath,
Bristol Fairy

PERENNIALS

BABY'S BREATH, Bristol Fairy. Far superior to old Baby's Breath. This new variety has large panicles of double white flowers all summer long. Lovely in the garden, fine for cutting. Grows 2-3 ft. tall.
Each \$1.25

BALLOON FLOWER (Platycodon). Large, showy, deep blue flowers on 12-inch stems in great profusion all summer.
Each \$0.35 6 for \$1.65
3 for .90 12 for 3.00

HARDY CARNATIONS. Choice hybrid garden pinks possessing all the good qualities you could ask for in a plant. Hardy as an Oak, neat habit of growth, blooms all summer. Mixed colors, spicy fragrance. What more could one ask? We think it is one of the finest garden plants.
Each \$0.35 6 for \$1.65
3 for .90 12 for 3.00

COREOPSIS. Bright yellow daisy-like flowers in profusion all summer long—easy to grow, fine for cutting. Grows 3 feet tall.
Each \$0.35 6 for \$1.65
3 for .90 12 for 3.00

DELPHINIUM (Hybrids). A favorite wherever flowers are grown. Stately spikes vary from pale blue to deepest indigo-blue and royal purple. Fine in the garden or for cutting. Grows 3-5 feet tall.
Each \$0.35 6 for \$1.65
3 for .90 12 for 3.00

GAILLARDIA, BURGUNDY. One of the showiest. Giant sized blooms of rich burgundy-red petals with gold tips. Easy to grow. Excellent for cutting. Grows 3 feet tall.
Each \$0.35 6 for \$1.65
3 for .90 12 for 3.00



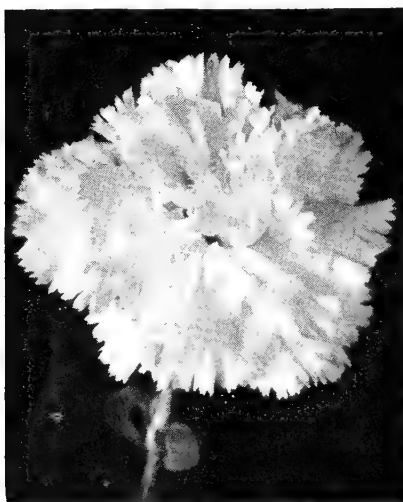
Gaillardia, Burgundy

LINUM PERENNE (Hardy Flax). Feathery foliage and sky-blue flowers in profusion. Grows 2 feet tall. Fine for cutting.
Each \$0.35 6 for \$1.65
3 for .90 12 for 3.00

TRITOMA (Red Hot Poker). These new hybrids are hardy with beautiful flower spikes of brilliant orange-red on graceful stems. 3-4 feet tall.
Each \$0.35 6 for \$1.65
3 for .90 12 for 3.00

PAINTED DAISY (Pyrethrum). Lovely Daisy-like flowers in shades of pink and red on long stems above graceful fernlike foliage.
Each \$0.35 6 for \$1.65
3 for .90 12 for 3.00

SWEET VIOLETS. Another well-known flower that is always popular. Deep violet and sweetly scented.
Clumps:
Each \$0.50 6 for \$2.60
3 for 1.35 12 for 4.95



Hardy Carnation



Dwarf Iris

PERFECT PEONIES

Bloom Every Year—Last a Lifetime—Easy to Grow
Plant them in your border, garden or most anywhere that they get some sunlight. They come up year after year with no care or bother.

MONS. JULES ELIE. One of the best Peonies grown. A beautiful silver-pink. Develops a high crown, strong grower and a very free bloomer. A splendid addition to the mid-season varieties. One of the largest and best.
Each \$1.50 3 for \$3.95

KARL ROSENFELD. The best early red. Very large flower, semi-rose type. Extremely vigorous grower, tall and free flowering.
Each 90c 3 for \$2.35

MME. BOULANGER. Immense blooms of glossy tender rose shading to heliotrope. Late midseason.
Each \$1.00 3 for \$2.75

EDULIS SUPERBA. One of the best commercial Peonies, a dark pink even color, large flat crown when fully open. Very fragrant, upright growth, early bloomer.
Each 50c 3 for \$1.35

FESTIVA MAXIMA. The best early white. Very large and full rose type, paper-white with crimson markings in center. Tall, strong grower.
Each 75c 3 for \$1.80

FONTENELLE. An early rich crimson with large perfect flowers.
Each \$1.00 3 for \$2.75

FELIX CROSSE. The most popular of all red Peonies. For freedom of bloom, beauty of flower and sureness of bloom, none other surpasses it.
Each 80c 3 for \$2.25

CHOICE IRIS

Beautiful as Orchids

BLUE TRIUMPH. 42 in. The finest light soft blue with flaring falls. As near perfection as any Iris to date.
Each 50c 3 for \$1.35

CALIFORNIA GOLD. 36 in. We consider this the finest deep yellow Iris created to date. It is simply superb, having a brilliance and purity of color and perfection of form not approached by any other deep yellow Iris. Flowers are large and very freely produced.
Each 50c 3 for \$1.35

CHEERIO. The best brilliant Iris, the fall being rich glowing satin ruby-red with a vivid orange beard. Standards are soft rose flushed yellow. Perfect in every way and a prodigious bloomer.
Each 75c 3 for \$2.00

CLARA NOYES. 36 in. A rich blend of Talisman-rose colors. No garden should be without this charming Iris. Must be seen to be appreciated.
Each 45c 3 for \$1.25

DAUNTLESS. One of the reddest of Iris. Color a velvety rose-red.
Each 50c 3 for \$1.35

DON JUAN. A magnificent Iris of huge size and lovely coloring with light ivory-lilac standards and bright red falls paling at the margin and heavily veined at the base.
Each 50c 3 for \$1.35

EGYPT. A grand Iris of immense size and great substance. Falls very large, long and drooping, of deep velvety maroon-purple with black sheen. Bright gold beard. A robust, free blooming, tall and well-branched variety.
Each 50c 3 for \$1.35

LENT A. WILLIAMSON. A rich royal purple with standards of lavender-violet blended yellow toward base.
Each 25c 3 for 60c

DOUBLE DUTY IRIS

These Neosho varieties flower two or more times each year.

AUTUMN KING. 36 in. Flowers large, clear blue-purple.
ELEANOR ROOSEVELT. 26 in. Profuse bloomer; rich violet.
Above varieties: Each 35c; 3 for \$1.00.

DWARF IRIS

Fine for rock garden, front of border, etc. Grow about 6 inches high and bloom real early. Colors purple and yellow.
3 for 35c 12 for \$1.25 25 for \$2.40

KOREAN IRIS

Large flowers 6 in. across and richly colored. Bloom after other Iris. Be sure and include some of these special varieties: White, Royal Purple, Blue and Mahogany.
Each 50c 3 for \$1.35

LANDSCAPE IRIS

For those who want a good assortment of colors, of unlabeled varieties, we offer this outstanding Landscape Collection.
12 for \$1.25 25 for \$2.35



*Bloom
Every
Year*

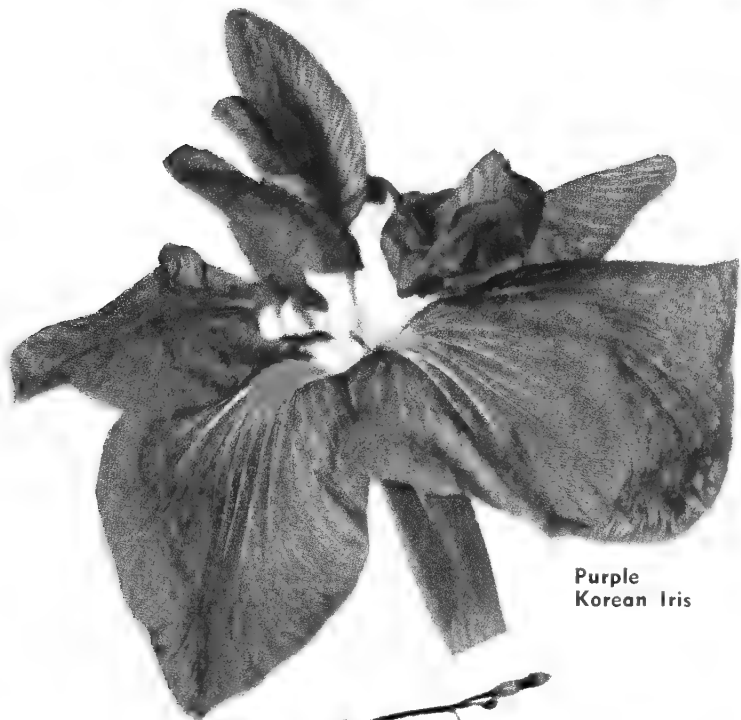
•
*Last a
Lifetime*

•
*Easy to
Grow*

•
See Back Cover
for Peony
Collection



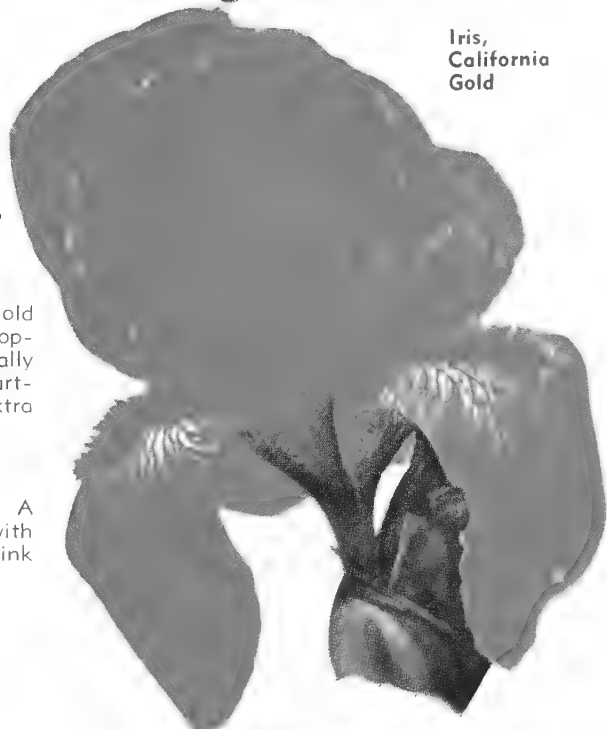
Peony, Mons. Jules Elie



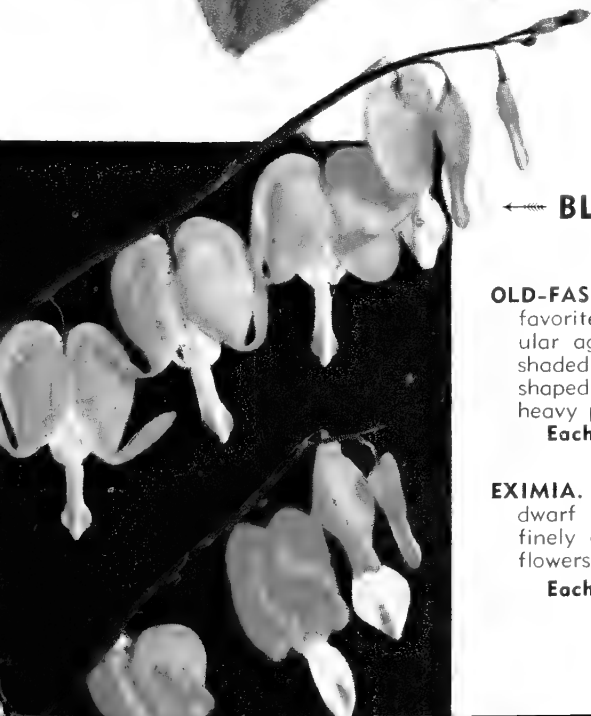
Purple
Korean Iris



Iris,
Cheerio



Iris,
California
Gold



← **BLEEDING HEART**

(Dicentra)

OLD-FASHIONED. 2 feet. An old favorite that is becoming very popular again. It thrives in partially shaded places. Graceful heart-shaped flowers in April-May. Extra heavy plants.

Each \$1.15 3 for \$3.25

EXIMIA. Plumy Bleeding Heart. A dwarf growing new variety with finely cut foliage and pretty pink flowers throughout the season.

Each 75c 3 for \$2.00

SHADE TREES *for Beauty and Comfort*



Weeping Willow

AMERICAN ELM. A majestic and graceful tree at home anywhere from the Rockies to the Atlantic. A grand old tree.

5-6 ft., \$1.35 8-10 ft., \$2.50
6-8 ft., 1.75 10-12 ft., 3.50

ELM, CHINESE. The fastest growing shade tree small leaves; hardy.

	Each	3 for
4-5 ft.	\$0.55	\$1.45
5-6 ft.75	1.95
6-8 ft.	1.00	2.75
8-10 ft.	1.75	4.75
10-12 ft.	2.50	6.95

NEOSHO ELM, CHINESE. (Budded.) This is a select strain of Chinese Elm which we bud to get uniform habit of growth.

	Each	3 for
5-6 ft.	\$1.00	\$2.75
6-8 ft.	1.35	3.75
8-10 ft.	1.95	5.50
10-12 ft.	2.75	7.75

NEOSHO BROADLEAF CHINESE ELM. The fastest growing tree in America. Hardy, drought resistant, beautiful. A sport of Chinese Elm discovered in our nursery row and from which we have propagated the past eight years. Its leaves are large and dark green. The bark is smooth and branches are straight and strong. Will stand high wind, dry summers and cold winters, and still grow from 8 to 14 feet in one year. The demand for this tree is so great we have never been able to build up a surplus stock, so if you want some of these beautiful, permanent, quick growing trees, you'd better place your order at once as our supply is limited. We offer them in the following sizes:

5-6 ft., \$1.50 8-10 ft., \$3.50
6-8 ft., 2.25

MAPLE, SILVER. Quick growing and graceful with deeply cut dark green foliage, silvery white beneath. Foliage colors a golden yellow in fall.

5-6 ft., \$1.35 8-10 ft., \$2.50
6-8 ft., 1.75 10-12 ft., 3.50

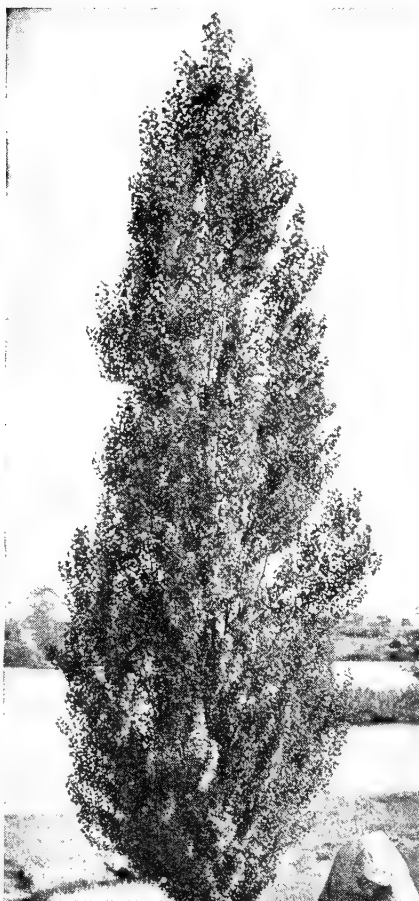
MAPLE, SUGAR. One of the best street and park trees. Dense, upright grower with brilliant colored foliage in the fall. Does well in most any location.

5-6 ft., \$1.75 8-10 ft., \$3.95
6-8 ft., 2.75 10-12 ft., 5.50

MAPLE, SCHWEDLER'S. Glorious colored foliage in the spring. Brilliant shades of scarlet, red and purple. In the summer the leaves turn deep ruddy green. In the fall a golden yellow. A symmetrical grower. Valuable as a lawn specimen, or for parks or streets.

5-6 ft., \$2.25 6-8 ft., \$3.50

Lombardy Poplar



PIN OAK. The finest of all Oaks, the most rapid grower—symmetrical, pyramidal form to 80 feet. Rich, dark, glossy green foliage is deeply cut and colors a beautiful coppery red in the fall. Sturdy and rugged—free from insects or diseases.

5-6 ft., \$1.75 8-10 ft., \$3.95
6-8 ft., 2.75 10-12 ft., 5.50

SYCAMORE. For a rapid growing tree of permanence it is hard to beat. Stately and tall with broad, coarse foliage which resists smoke, dust and ravages of insects.

6-8 ft., \$1.95 10-12 ft., \$3.75
8-10 ft., 2.75

LOMBARDY POPLAR. Tall, slender trees of rapid growth. Dark green leaves.

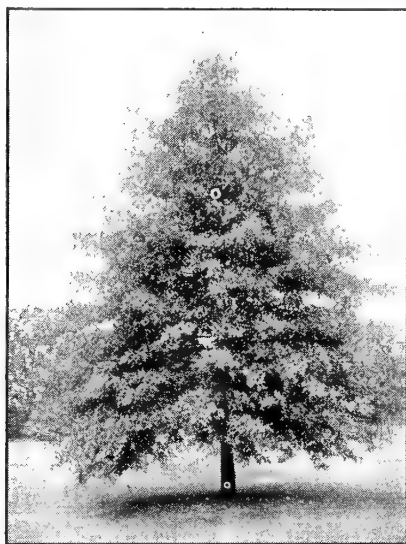
	Each	5 for
3-4 ft.	\$0.45	\$2.00
4-5 ft.55	2.50
5-6 ft.70	3.25
6-8 ft.85	4.00
8-10 ft.	1.25	5.50

WEeping WILLOW. Beautiful, graceful lacy tree with long, drooping branches, densely covered with fresh green leaves. A rapid grower. We have either the green-barked or golden-barked varieties. State preference when ordering.

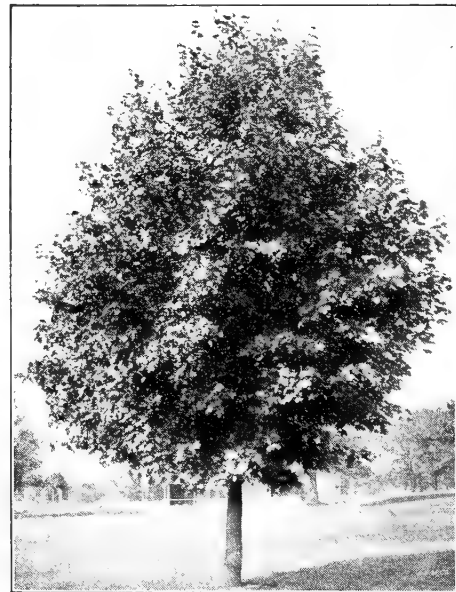
5-6 ft., \$1.35 8-10 ft., \$2.65
6-8 ft., 1.75

PERMANENT WAVE WILLOW. Something new. The tree with a "permanent wave"—branches and leaves are curled, waved and twisted. A startling novelty. It grows upright and weeps a little with the weight of the leaves, making a perfectly lovely, graceful tree.

5-6 ft., \$1.50 8-10 ft., \$2.75
6-8 ft., 2.00



Pin Oak



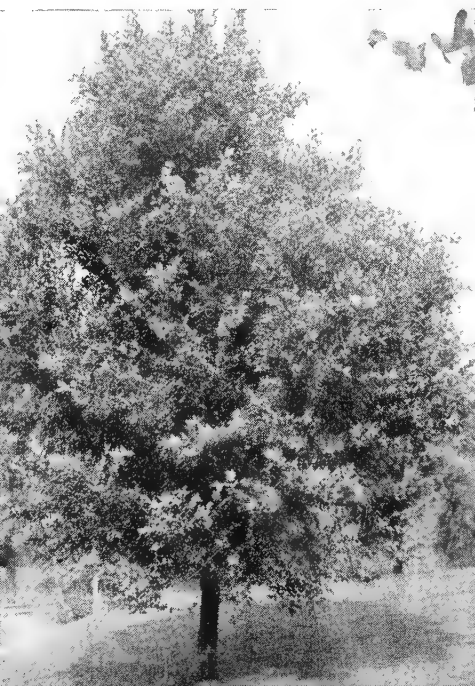
Sugar Maple

Schwedler's Maple



Broadleaf Chinese Elm

[34]



FROM

NAME _____

POST OFFICE _____

R. F. D. No. _____ STATE _____

Neasha NURSERIES COMPANY

Neasha, MISSOURI

"Yours for Growing Satisfaction"

NEOSHO NURSERIES CO.

NEOSHO, MO.

SMALL TREES for Lawn and Borders

FLOWERING CRABS

Flowering Crabs are the most profuse bloomers of any hardy flowering trees. They are extremely hardy and will thrive in most any position or exposure. We list the two most popular varieties.

BECHTEL'S. A double form of the Wild Crab. In the spring is covered with double pink blossoms exactly like small Roses. They have a delicate violet scent. A dwarf compact grower which makes a fine lawn specimen.

2-3 ft., \$1.25 3-4 ft., \$1.60

HOPA. Beautiful in bloom, in foliage, in fruit. Flower buds are bright red, opening into fragrant bright pink flowers. Foliage is maroon and from midsummer clusters of small red Crab Apples gleam brightly along the branches. Perfectly hardy—easy to grow.

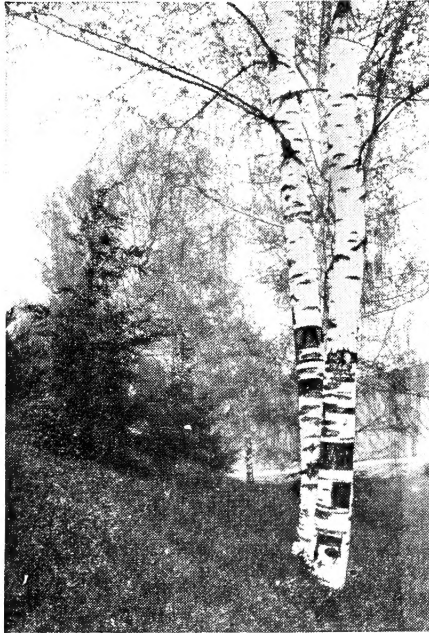
3-4 ft., \$1.25 4-5 ft., \$1.60

WHITE FLOWERING DOGWOOD. One of our most handsome native trees. In the spring its large white flowers are spectacularly beautiful; in the autumn its glittering red berries are ornamental to the highest degree. Foliage turns pink, salmon, scarlet and maroon in the fall.

2-3 ft., \$1.25 3-4 ft., \$1.75

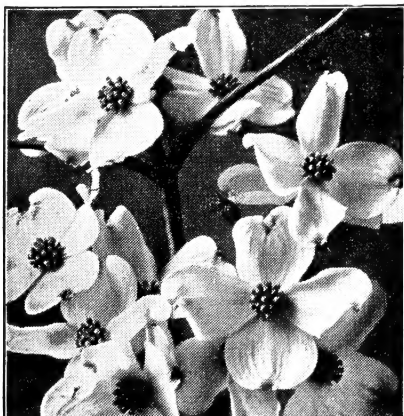
PINK DOGWOOD. Similar in all respects to the White Flowering except that flowers are reddish pink. Ideal for specimens.

2-3 ft., \$1.95 3-4 ft., \$2.75



White Birch

Pink Dogwood



FLOWERING PEACH. A small tree with beautiful, double red flowers in spring.

2-3 ft., \$1.00 3-4 ft., \$1.50

MIMOSA (Silk Tree). A low flat-headed tree with Acacia-like foliage and feathery, fragrant pink blossoms in summer. Will grow in practically all types of soil. Not hardy north of Kansas City, Missouri.

2-3 ft., \$1.25 3-4 ft., \$1.60
4-5 ft., \$1.95

RED LEAF PLUM. A dwarf tree of compact shape and habit with deep rich blood-red leaves, become darker as the season advances. Covered with small pink blossoms in early spring. Makes a striking accent in the yard.

2-3 ft., \$1.25 3-4 ft., \$1.60

REDBUD. A slender graceful tree which is covered in early spring before the leaves appear with clusters of purplish pink-pea blossoms which makes the tree appear as a small pink cloud.

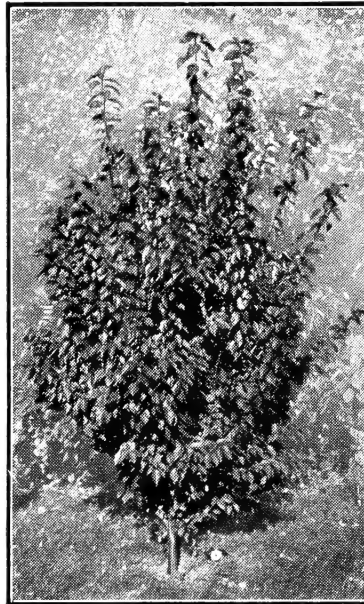
3-4 ft., \$1.25 4-5 ft., \$1.60
5-6 ft., \$1.95

WHITE BIRCH. A graceful tree 30-40 feet high with white bark, slender branches, small dark green leaves. One of the loveliest trees for any lawn.

5-6 ft., \$2.75 6-8 ft., \$3.75

SWEET GUM. A beautiful native tree. Shiny star-shaped leaves that color brilliantly in the fall. Exceedingly ornamental, free from pests and diseases. Pyramidal habit. Excellent for homes and street planting.

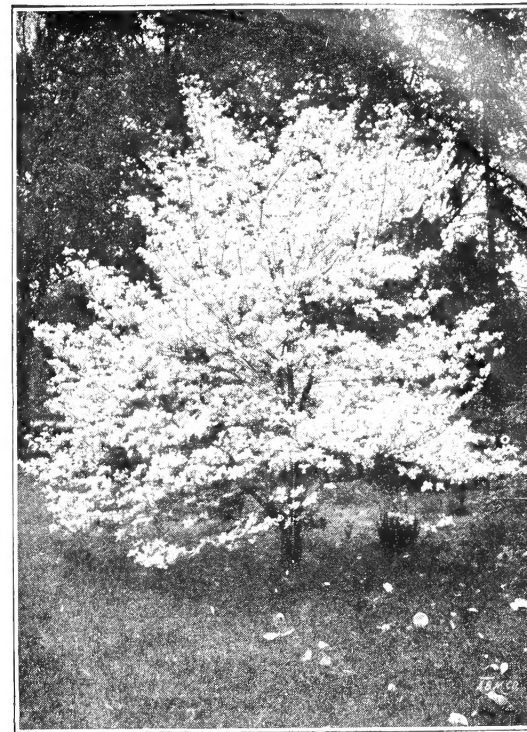
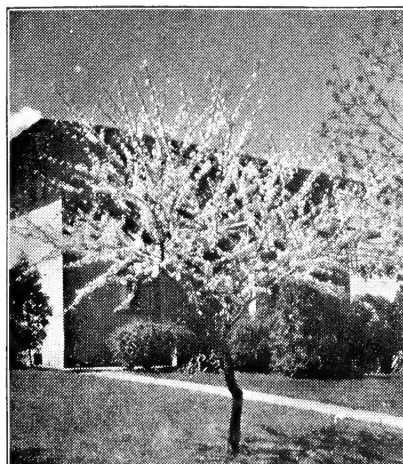
5-6 ft., \$2.25 6-8 ft., \$2.95



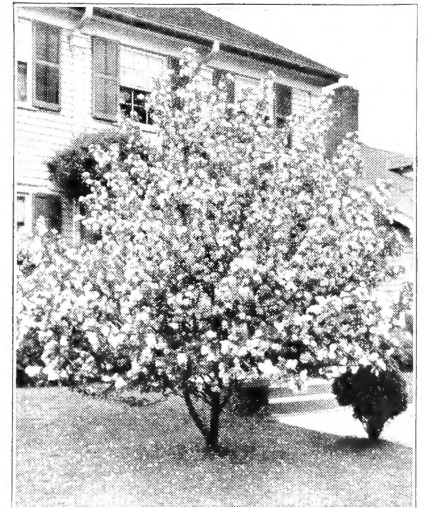
Red Leaf Plum

Redbud

[35]

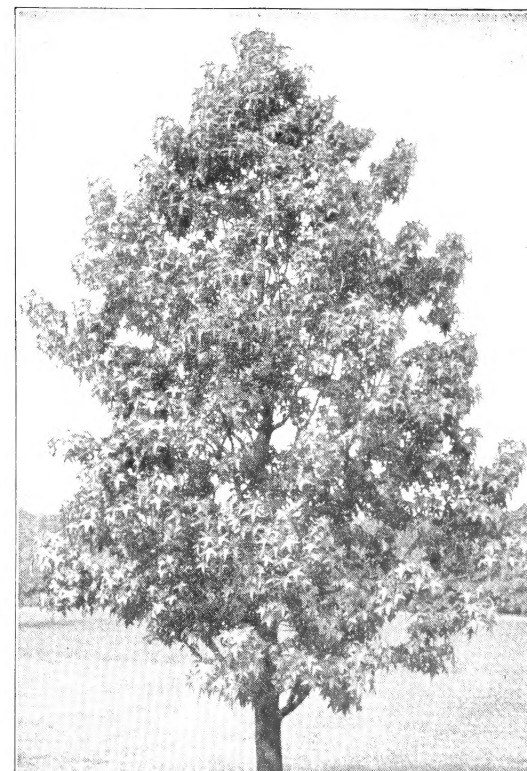


White Flowering Dogwood



Bechtel's Flowering Crab

Sweet Gum



Rainbow Collection

of GLADIOLUS

Our most popular assortment of beautiful colors; big flowers in fine blooming-size bulbs.

25 for \$1.65

50 for 2.95

100 for 5.50



RED LAKE CURRANT

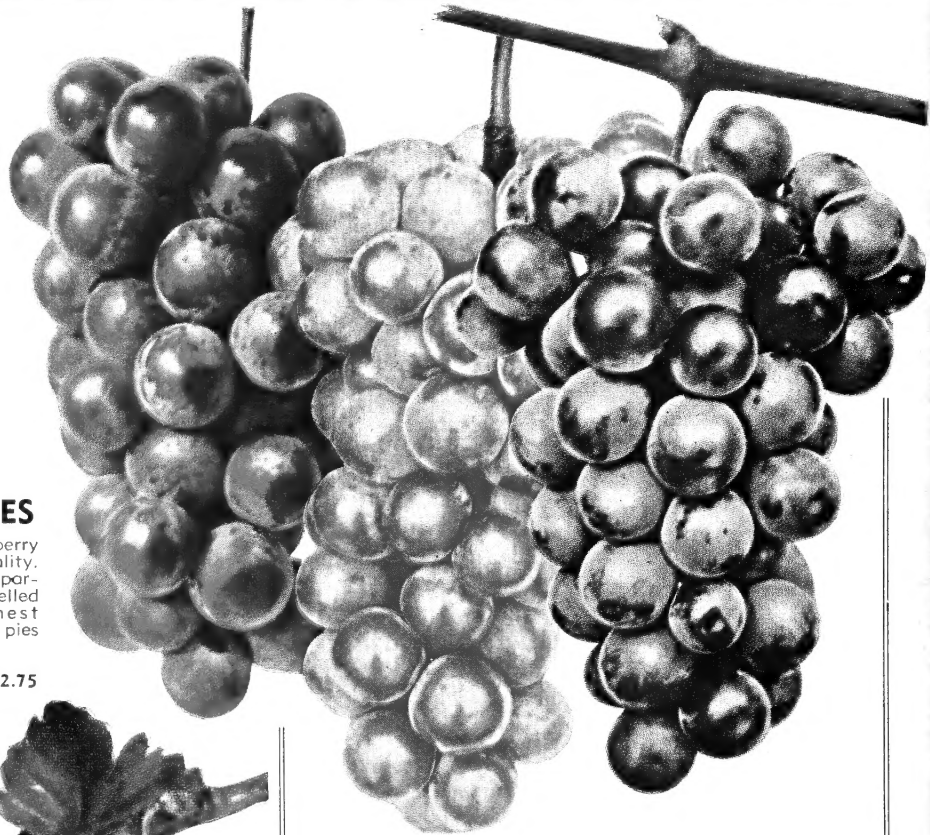
Big, well-filled clusters of glossy red, pleasantly acid fruit. Fine for jelly and preserves. A vigorous grower and heavy producer.

2 for \$1.20
5 for 2.75
9 for 4.50

Oregon Champion GOOSEBERRIES

The ranking Gooseberry in both size and quality. Extra large pale transparent berries of unexcelled quality. Brings highest prices. Wonderful for pies and preserves.

No. 1 Plants:
2 for \$1.19 5 for \$2.75
9 for \$4.50



Red, White and Blue GRAPE SPECIAL

This assortment particularly chosen for hardiness, long season, wonderful flavor, easy to grow. An ideal assortment for every home owner.

2 Moore's Early 1 Portland
2 Concord 1 Agawam
2 New Fredonia

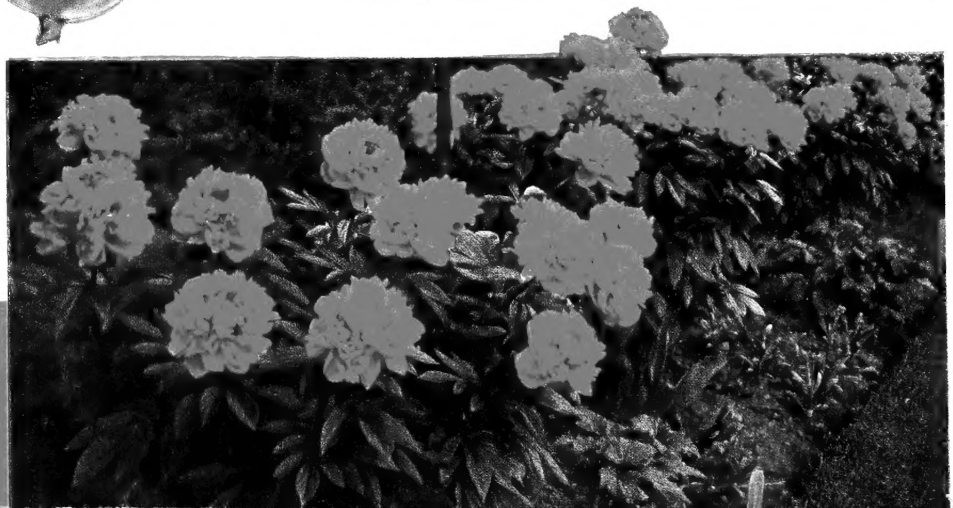
8 Sturdy Vines
(Reg. Value \$3.25) **\$1.98**

SPECIAL PEONY Collection

A real bargain.
3-5 eye plants in
good varieties of our
choice.

1 Pink 1 Red
1 White

All 3 for \$1.50 3 Collections \$4.00



NEOSHO
NURSERIES CO.

Neosho, Missouri